

IMAGE-LINE FL STUDIO 11

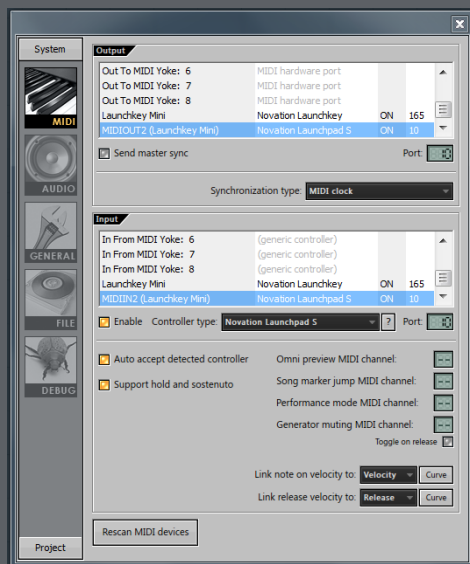
BASIC USE

Load FL Studio 11, open the 'Options' menu and select 'MIDI Settings'. In the list of input devices, select the 'Launchkey Mini' device and check 'Enable'. Rotary controls on the Launchkey Mini will then automatically control pans for channels 1–8 in the mixer, and changing the MIDI channel of the keyboard will bank the rotary controls to channels 9–16, 17–24 etc. They can also be mapped to different controls in FL Studio using MIDI learn.

ADVANCED USE

Download the FL Studio Launchkey Mini support pack from the Novation website. Inside the zip are three folders:

- (1) Launchpad scripts
- (2) FL templates for Launchkey
- (3) FPC map for Launchkey



First, ensure that FL Studio is not running. Navigate to **C:\Program Files (x86)\Image-Line\FL Studio 11\System\Hardware specific\Novation Launchpad** (note that the path of your installation may be different). Delete the contents of this directory and then copy in all files from the 'Launchpad scripts' directory (1).

Now load FL Studio 11, open the 'Options' menu and select 'MIDI Settings'. In the list of input devices, select 'Launchkey Mini', check 'Enable', choose 'Novation Launchkey' as the controller type, and set the port to 165. Again in the list of input devices, select 'MIDIIN2 (Launchkey Mini)', check 'Enable', choose 'Novation Launchpad S' as the controller type, and set the port to any port that is not currently used in either of the input or output sections (e.g. port 10 shown here). In the list of output devices, select 'MIDIOUT2', check 'Enable', choose 'Novation Launchpad S' as the controller type, and set the port to the same port as that for MIDIIN2.

The InControl LED and pads will then light up. Various control pages are available, which you can step through using the track buttons.

In the FL Studio Launchkey Mini support pack, the 'FL templates for Launchkey' directory (2) contains starter projects for working with your Launchkey Mini. The 'FPC map for Launchkey' directory (3) contains a Launchkey map for using FPC in Launchkey's Basic Mode. For more information on this see <http://www.novationmusic.com/answerbase>.

LAUNCHKEY

FPC (notes, ch. 2)

1

40

37

2

38

36

3

46

42

4

44

82

5

49

48

6

55

47

7

51

45

8

53

43

Play

▲

Stop

▼

Switches (CC, ch. 1)

1

11 (on)

11 (off)

2

12 (on)

12 (off)

3

13 (on)

13 (off)

4

14 (on)

14 (off)

5

15 (on)

15 (off)

6

16 (on)

16 (off)

7

17 (on)

17 (off)

8

18 (on)

18 (off)

Play

▲

Stop

▼

Increase/Decrease (CC, ch. 1)

1

2 (up)

2 (down)

2

3 (up)

3 (down)

3

4 (up)

4 (down)

4

5 (up)

5 (down)

5

6 (up)

6 (down)

6

7 (up)

7 (down)

7

8 (up)

8 (down)

8

9 (up)

9 (down)

Play

▲

Stop

▼

Gross Beat (CC, ch. 1)

1

29 (slot 1)

29 (slot 9)

2

29 (slot 2)

29 (slot 10)

3

29 (slot 3)

29 (slot 11)

4

29 (slot 4)

29 (slot 12)

5

29 (slot 5)

29 (slot 13)

6

29 (slot 6)

29 (slot 14)

7

29 (slot 7)

29 (slot 15)

8

29 (slot 8)

29 (slot 16)

Play

▲

Stop

▼

Slicex (notes, ch. 2)

1

68

60

2

69

61

3

70

62

4

71

63

5

72

64

6

73

65

7

74

66

8

75

67

Play

▲

Stop

▼

Aeolian (notes, ch. 2)

1

72

60

2

74

62

3

75

63

4

77

65

5

79

67

6

80

68

7

82

70

8

84

72

Play

▲

Stop

▼

Transport

1

Tempo + 0.1 bpm

Tempo - 0.1 bpm

2

Tempo + 1 bpm

Tempo - 1 bpm

3

Tempo + 5 bpm

Tempo - 5 bpm

4

Tempo + nudge

Tempo - nudge

5

Tap tempo

Show playlist

6

Undo up

Undo down

7

Selected channel up

Selected channel down

8

Record

Metro-nome

Play

▲

Stop

▼