



Cubase SX3 Generic Surface and the Novation X-Station



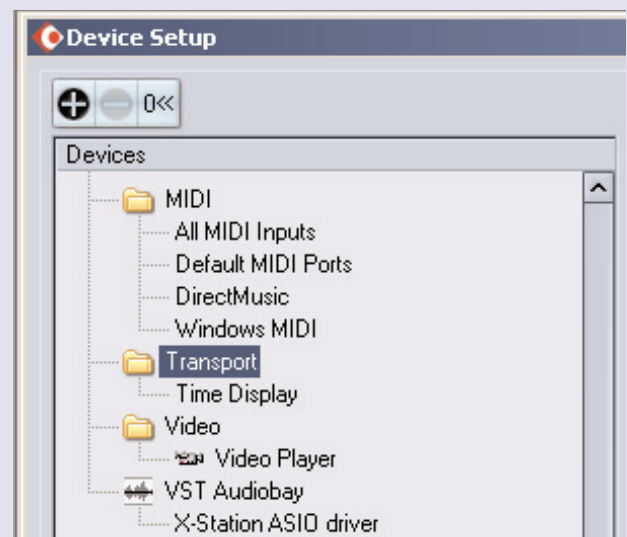
Introduction

The Cubase SX3 folder contains two files - 'xstn.xml' and 'XStation Default.cpr'. The xstn.xml is the file that contains all the control assignments for the 4 factory Cubase templates found in the X-Station. These are templates 7,8,9 and 10. The XStation default.cpr is a special project that should be used with these control assignments.

1) To insert the xml file into Cubase. Click 'Devices' followed by 'Device Setup..'



2) Look at the list of devices shown. If 'Generic Remote' is not listed, this will need to be added as shown on the next step. If Generic Remote is shown, skip to step 4.

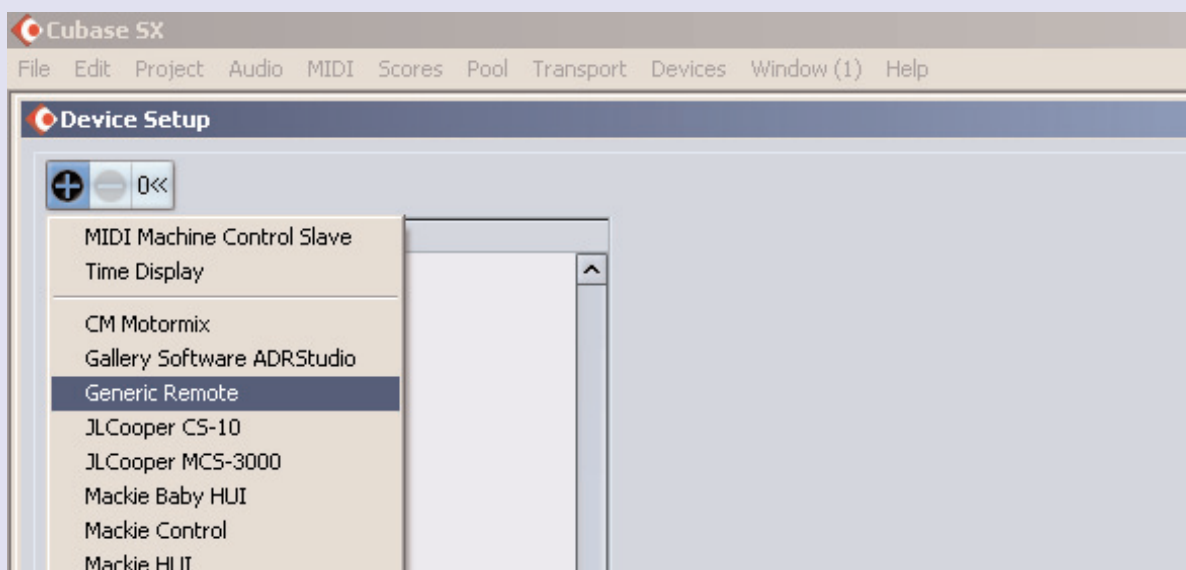




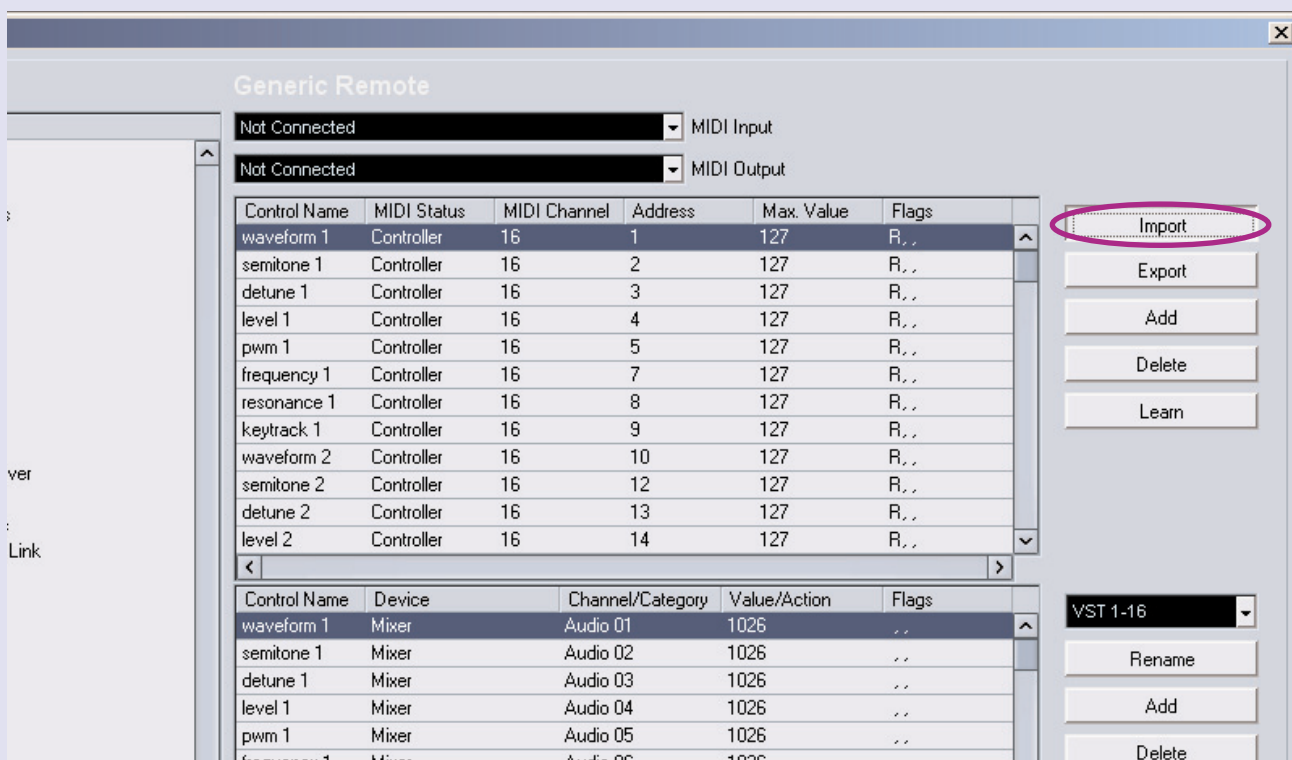
Cubase SX3 Generic Surface and the Novation X-Station



3) To add the Generic Remote, click the '+' button and select 'Generic Remote' from the pop up list of devices .



4) From the Generic Remote box, click the 'Import' button.

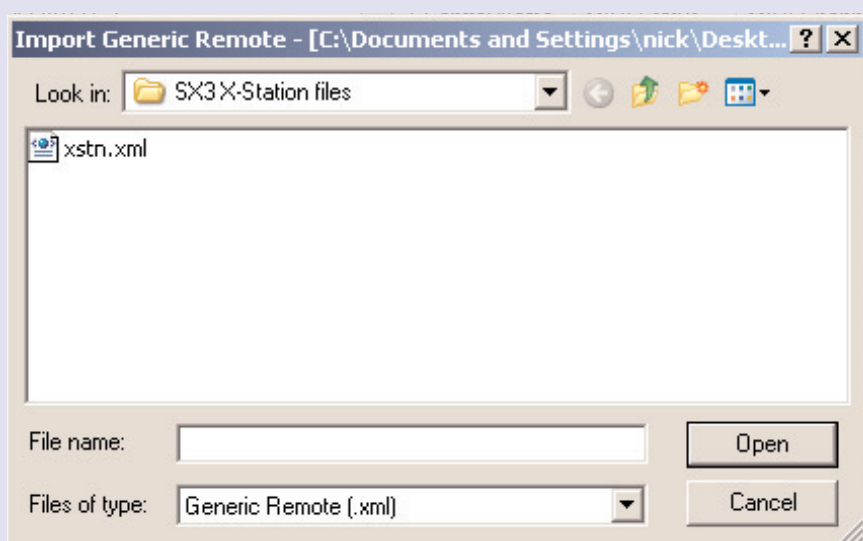




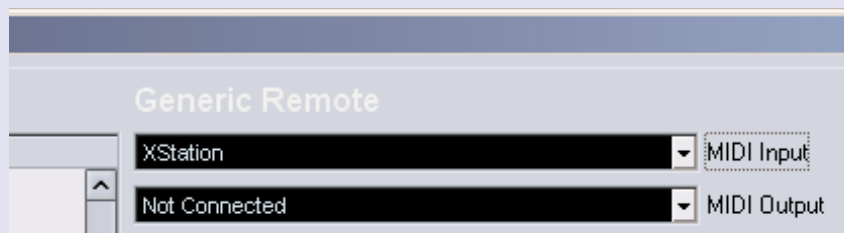
Cubase SX3 Generic Surface and the Novation X-Station



5) Browse to the xstn.xml file, select this file and click 'Open'



6) Set the MIDI input to X-Station. **Keep the MIDI output for the Generic Remote set to Not Connected.**



6) Click the 'OK' button to make the changes final. Open the Xstation project.cpr as a starting point for any songs. This ensures that the volume, pan and send controls operate as intended.