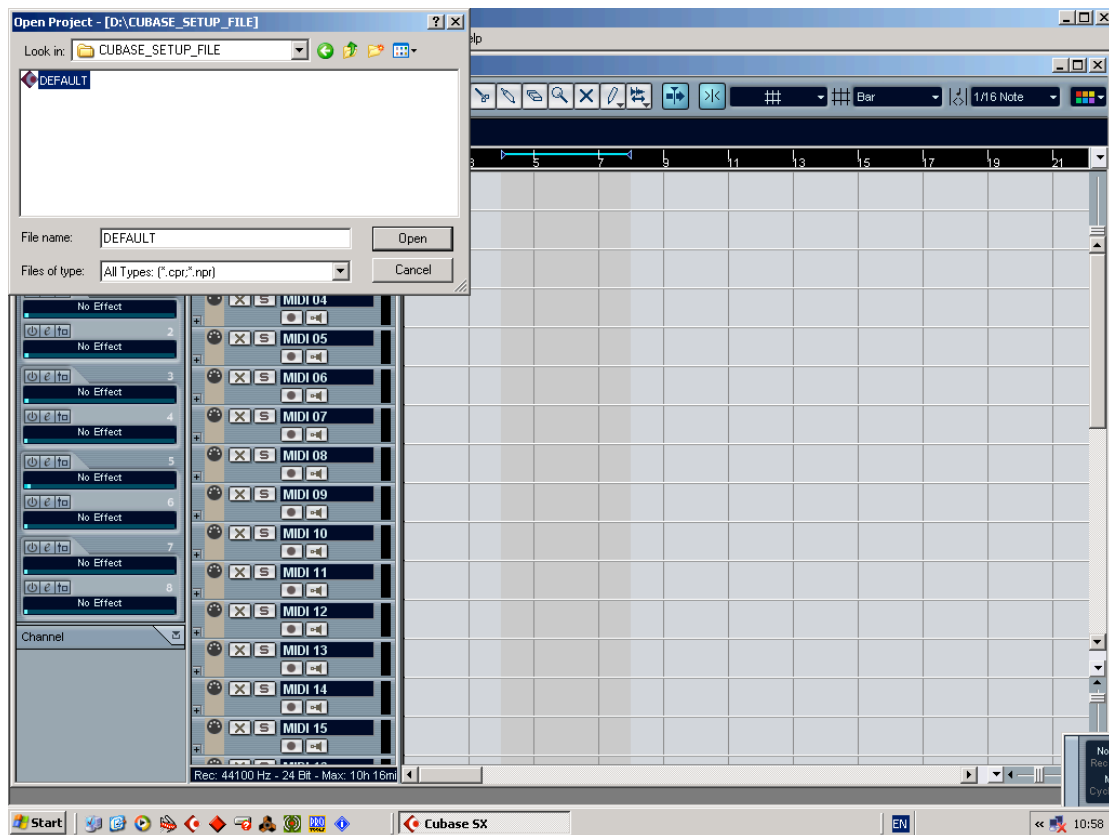
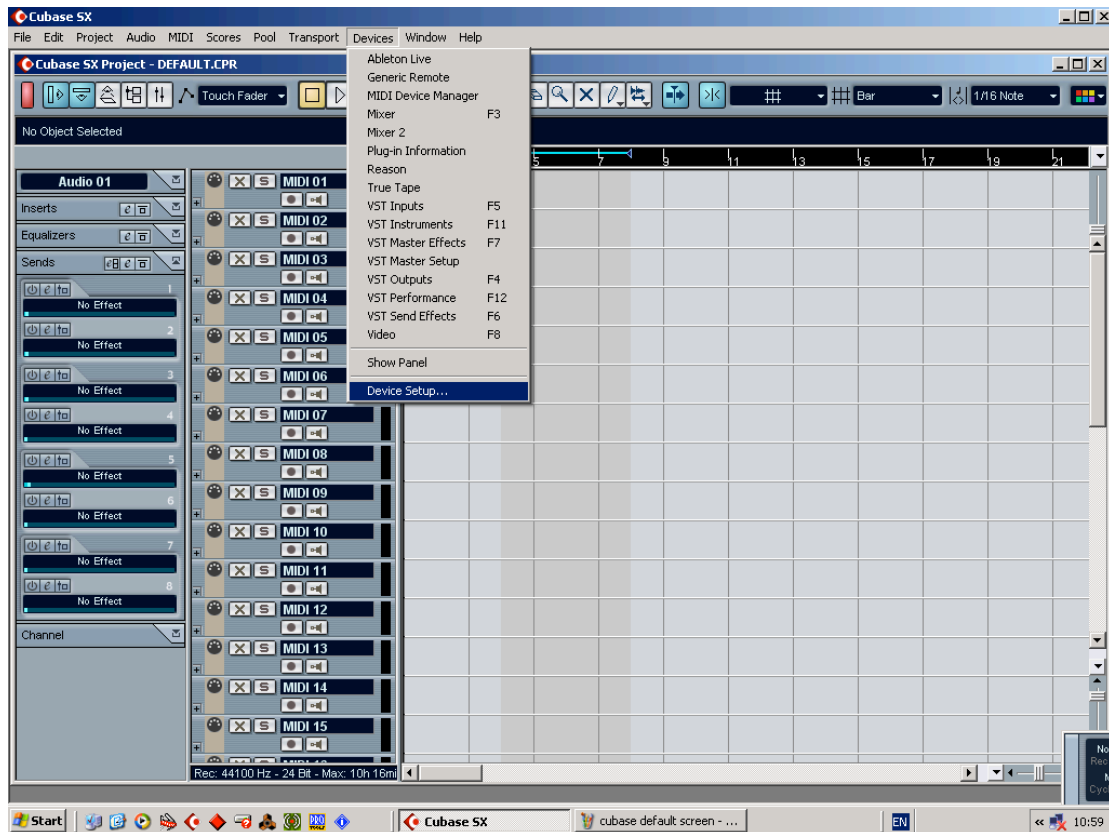


Ensure that the Remote SL is connected to Cubase and is turned on. To Use the Remote SL with Cubase SX, install the default arrangement supplied with the template download into Cubase as follows:

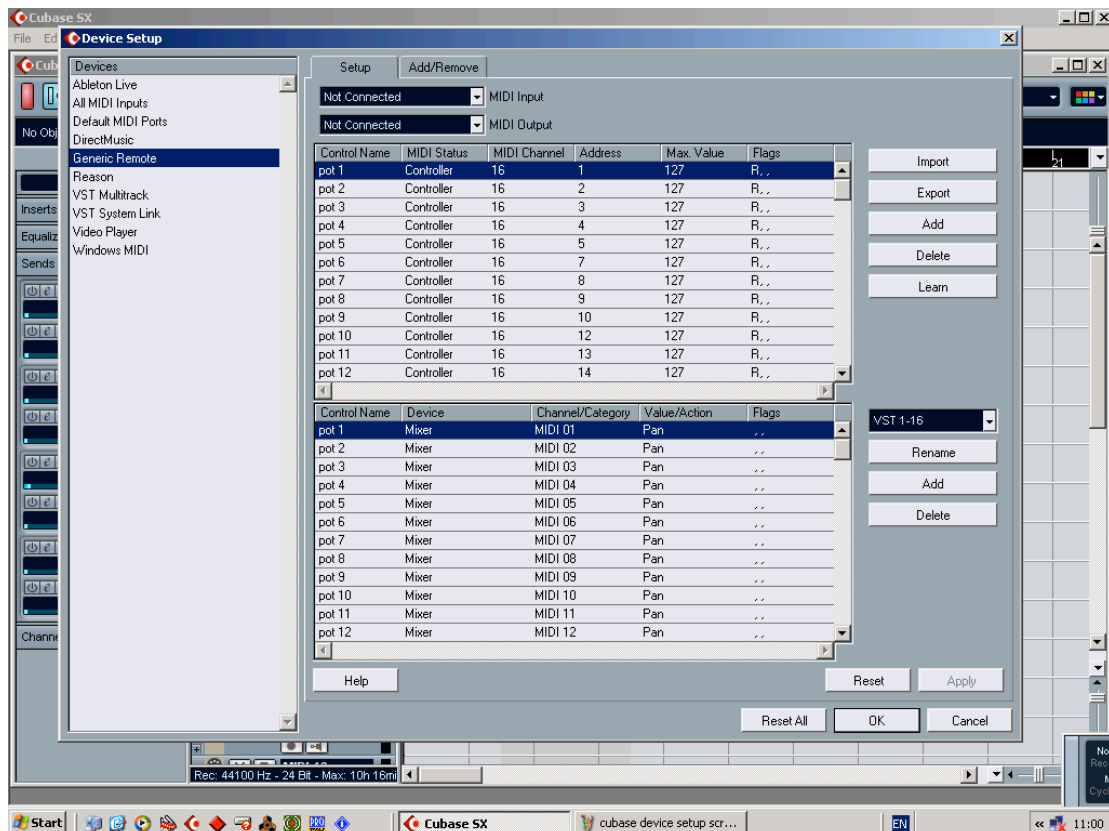


This arrangement has 16 MIDI tracks and 16 audio tracks in the correct order. This is the only special feature of the arrangement, but this is the best arrangement with the RemoteSL Cubase templates.

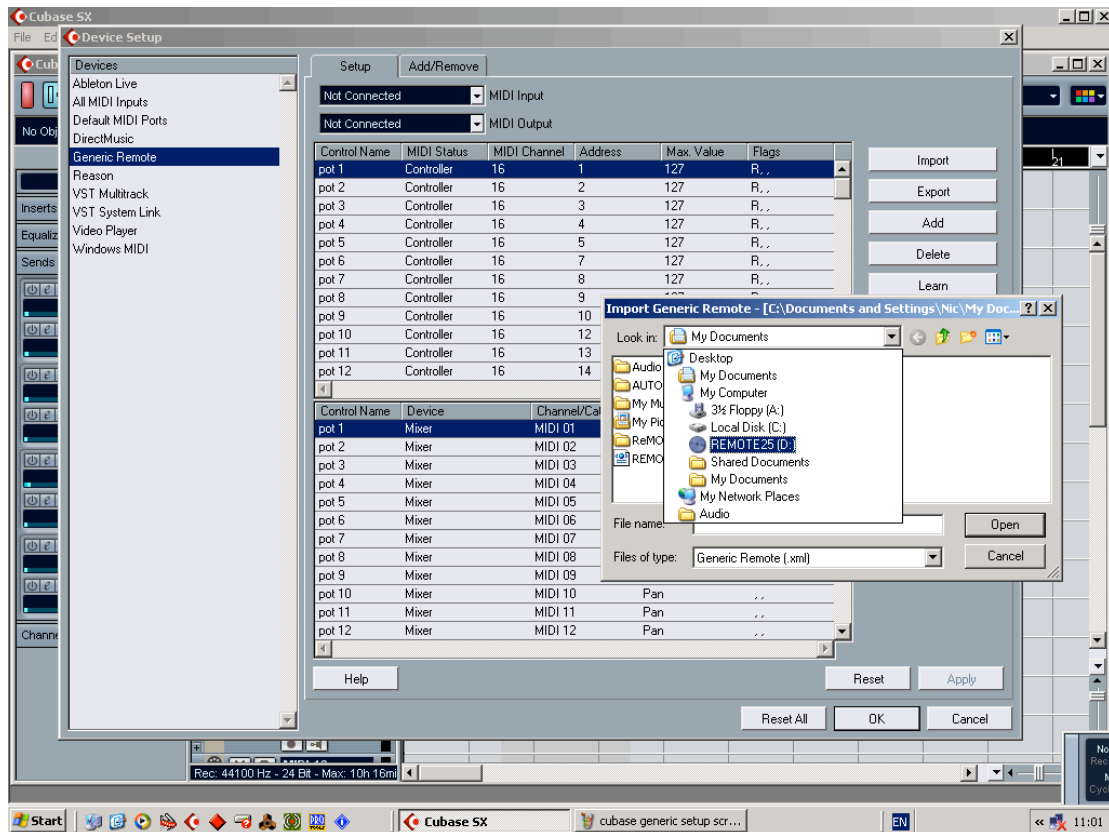
Next, open the device set up panel:



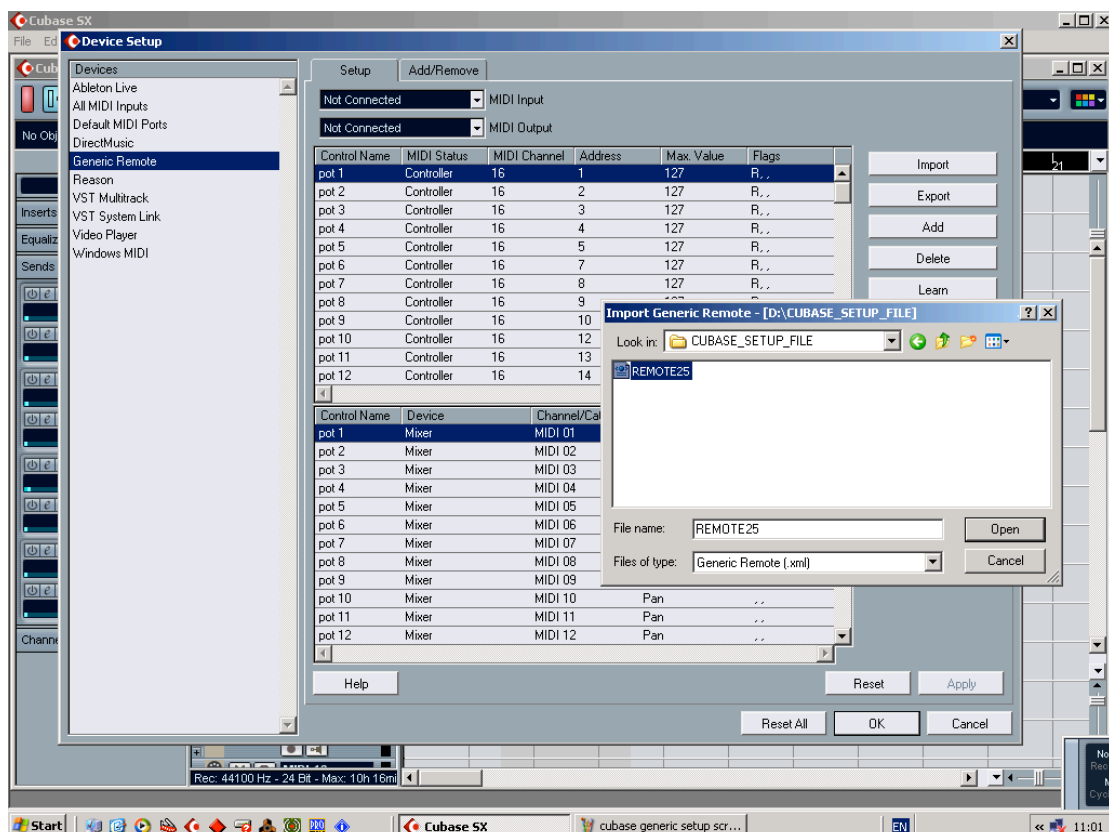
From here you can open the generic remote options:



Next, click on import to open up a new dialogue box:

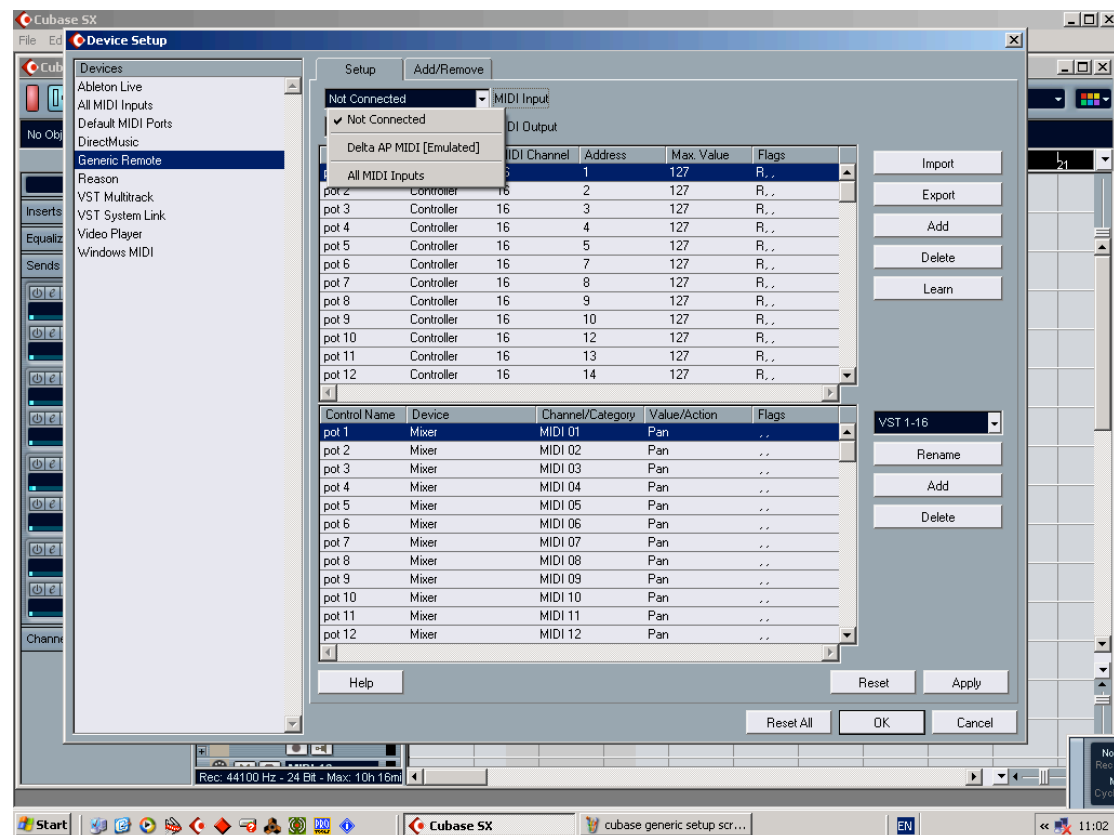


Here you can search your computer for the template download and find the Cubase\_setup\_file folder which contains the Cubase SX generic remote file named remoteSL.xml :



Click open to open this file.

Now you can assign the MIDI input that is going to be used to control Cubase:



The Remote SL will be shown in the input dialogue box if it is connected and switched on and Port1 should be selected. Click apply and ok at the bottom right of the above screen. These changes will then take place.

The Remote is now ready for use with Cubase SX.