

# LAUNCHKEY

## DAW SETUP GUIDE

### DAW SETUP GUIDE

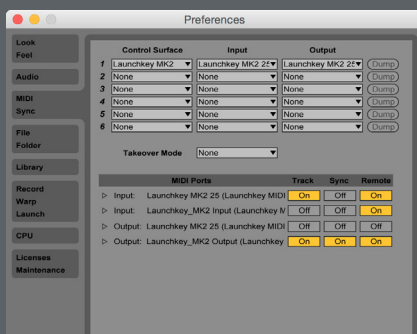
Launchkey has built-in support for controlling the most common parameters in your Digital Audio Workstation (DAW). Connect your Launchkey to your computer and proceed with the following setup steps, which will differ depending on your DAW.

Note: In most DAWs, 'pot pickup' is enabled by default. This means that faders and knobs on the screen will move only when the physical control being moved has travelled past the position shown on the screen. This helps to avoid sudden jumps in parameters.

### ABLETON LIVE

Your Launchkey will be auto-detected and configured in Ableton Live. If you wish to check or change the settings, follow this section.

Open the 'Live' menu (Mac OS X) or the 'Options' menu (Windows), and select Preferences. Click on the 'MIDI' tab. In an empty row, choose 'Launchkey MK2' as the Control Surface. On Mac OS X, select 'Launchkey MK2 25/49/61 (Launchkey InControl)' for the input and output ports. On Windows, select 'MIDIIN2 (Launchkey MIDI)' as the input port and 'MIDIOUT2 (Launchkey MIDI)' as the output port. 'Make sure that Track and Remote are enabled for both Launchkey input ports.



### LOGIC PRO

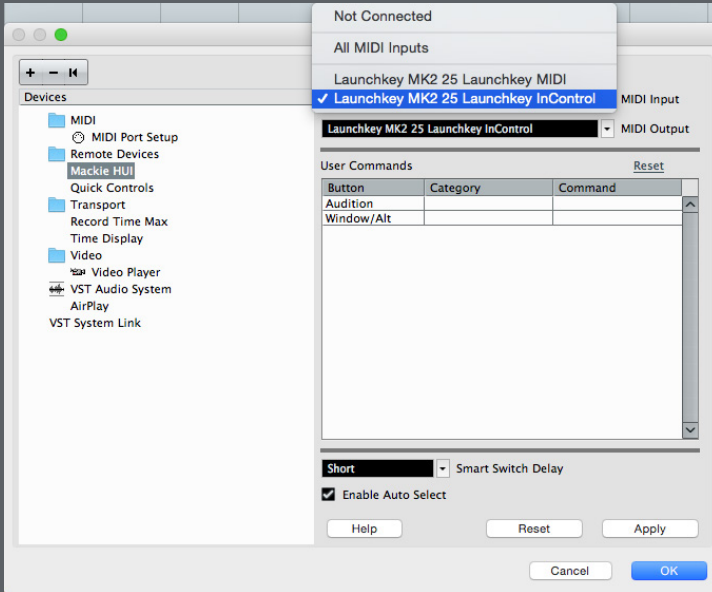
Open the 'Logic Pro' menu and select Preferences – Control Surfaces – Setup. Select New – Install. Find the Mackie Designs 'HUI' model in the list, and click 'Add'.



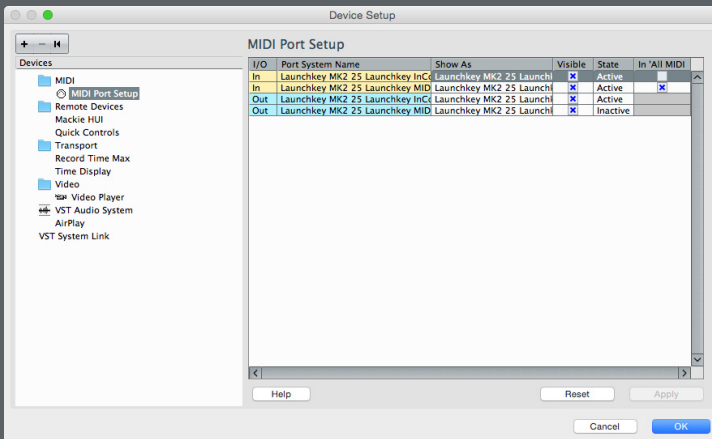
Close the install window; you should now see a HUI menu on the left-hand side of the Setup window (you may need to show the inspector – right-click and select 'Show/Hide Inspector'). Click the arrow to expand the contents of this menu. Change both the Output Port and the Input Port to 'Launchkey InControl', exit the Setup window.

## STEINBERG CUBASE

Open the 'Devices' menu and select Device Setup. Click the '+' icon in the top-left corner, and choose 'Mackie HUI'. This should add 'Mackie HUI' to the list of devices on the left, under 'Remote Devices'.



When 'Mackie HUI' is selected in this menu, options should appear on the right. On Mac OS X, set both the MIDI Input and MIDI Output as 'Launchkey MK2 25/49/61 Launchkey InControl'. On Windows, set the MIDI Input as 'MIDIIN2 (Launchkey)' and MIDI Output as 'MIDIOUT2 Launchkey'.

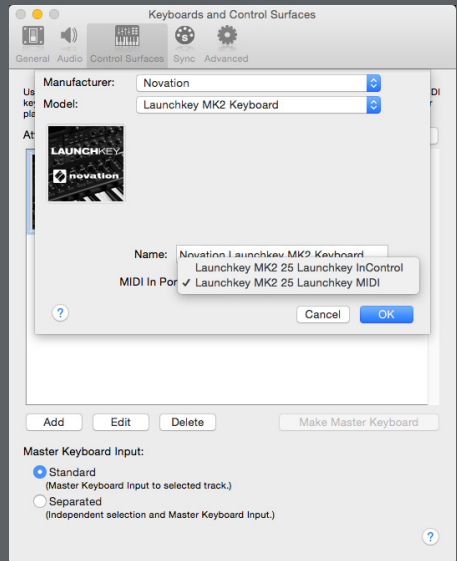
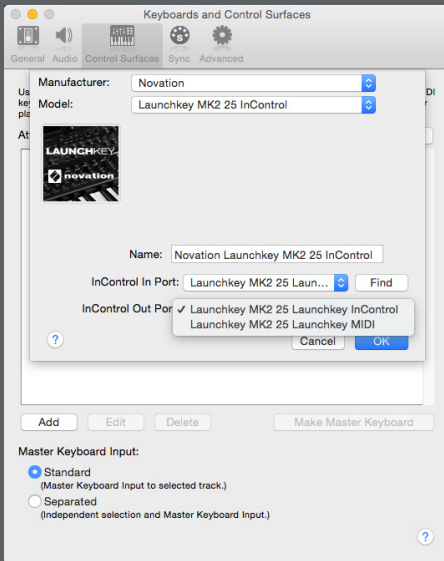


Select 'MIDI Port Setup' from the left-hand menu. Set the 'Launchkey MK2 25/49/61 Launchkey InControl' port (Mac OS X) or 'MIDIIN2 (Launchkey)' port (Windows) to inactive by clicking the blue 'X' under 'In All MIDI'.

## PROPELLERHEAD REASON

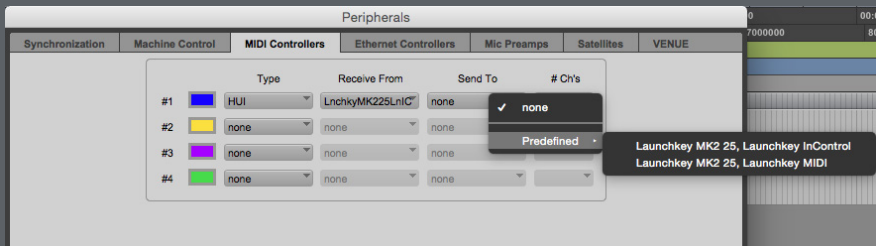
Install the Launchkey Reason software, which is available on the Novation website. Open Reason, click on the 'Reason' menu on Mac OS X or the 'Edit' menu on Windows and select Preferences. Click the 'Control Surfaces' tab, and hit 'Auto-detect Surfaces'. This should automatically configure Reason to use your Launchkey.

You will see two devices shown in Reason – one for the keyboard and one for the InControl support. If you wish to check/change the settings please refer to the following two screenshots:



## AVID PRO TOOLS

Open the 'Setup' menu and select Peripherals. Choose the MIDI Controllers tab. In an empty row, set the Type as 'HUI'. For both 'Receive From' and 'Send To', select Predefined, 'Launchkey MK2 25/49/61, Launchkey InControl' (Mac OS X) or 'MIDIIN2 (Launchkey)' (Windows). Make sure '# Ch's' is set to 8, click OK.



# CONTROL MAPPING GUIDE

## CUBASE/PRO TOOLS/LOGIC

Launchkey Control	Assignment
Track left/right	Move current track left/right
Faders 1-8	Volume levels 1-8 for current channel bank
Buttons 1-8	Mutes/solos for current channel bank
Knobs	Pans 1–8 for current channel bank
Scene Launch buttons top/bottom	Move current channel bank left/right
Transport	Standard transport functions

## ABLETON LIVE

Launchkey Control	Assignment
Track left/right	Move current track left/right
Faders 1-8	Volume levels 1-8 for current channel bank
Master fader (Launchkey 49/61)	Master volume
Fader (Launchkey 25)	Volume of currently selected track
Buttons 1-8	Mutes/solos for current channel bank
Button 9	Switch mute/solo functionality for buttons 1-8
Knobs	Parameters 1–8 on currently selected device Pans 1-8 Sends 1-8 (Send A, Send B... Send F)
Drum pads (top row)	Launch clip on corresponding track at current scene
Drum pads (bottom row)	Stop all clips on corresponding track
Scene Launch buttons top/bottom	Move current channel bank left/right by eight
Transport (excl. REW/FF)	Standard transport functions
Transport REW/FF	Move current scene up/down

## PROPELLERHEAD REASON

Refer to the 'Launchkey Reason Control Guide' on the Novation website.

