

IMPULSE

USER GUIDE

Version 5



CONTENTS

INTRODUCTION	4
Key Features	4
About This Manual	4
What's In The Box	5
Power Requirements	5
Glossary	6
Hardware Overview	7
Top View – assignable and non-assignable controls	7
Rear view – connections	9
IMPULSE SETUP EXAMPLES	10
Interfacing to a computer	10
Manual mapping mode	10
Interfacing to MIDI hardware	10
Using external hardware and a computer together	11
MENU OVERVIEW	12
LCD features and Menu Navigation	12
EXPLORING IMPULSE	13
Loading and Saving a Template	13
Help Mode	14
Configuring Impulse Controls	14
Preview	15
Setup Mode	15
Keyboard Settings	17
MIDI Channel	18
Zones	18
Program Change	19
Transport Controls	20
Arpeggiator	20
Arpeggiator Settings menu	21
Setting the Arp/Roll Tempo	22
Roll Mode	23
Boot Menu	23
USING IMPULSE WITH HUI	25
Introduction	25
HUI Connection	25
Releasing/re-entering the fader section from HUI mode	25
Releasing/re-entering the encoder section from HUI mode	25
Channel Control	25
DAW Setup	27
DAW GUIDE	31
Ableton Live and Clip-launch mode (Mac or Windows)	31

TROUBLESHOOTING 33

 Basic Troubleshooting Examples. 33

FACTORY TEMPLATES. 34

ASSIGNABLE CONTROLS – PARAMETERS AND RANGES 35

MIDI IMPLEMENTATION TABLE 39

IMPORTANT SAFETY INSTRUCTIONS41

ENVIRONMENTAL DECLARATION. 42

 For USA. 42

 For Canada 43

COPYRIGHT AND LEGAL NOTICES 43

INTRODUCTION

Thank you for purchasing the Novation Impulse MIDI controller keyboard. As well as the music keyboard itself, Impulse is equipped with a range of controllers to allow the modern musician to create great music in the studio, in live performance or on the move. Easy integration with your music software has been a primary consideration of Impulse's design team.

This guide will introduce you to Impulse and explain the various ways you can use Impulse with your music software, either with or without other MIDI hardware, in your recording set-up.

For additional information, up to date support articles and a form to contact our Technical Support Team please visit the Novation Help Centre at: support.novationmusic.com

Key Features



- Available with 25, 49 or 61-note semi-weighted piano-style keyboard
- 8 rotary encoders
- 9 faders (49/61 note versions)
- 8 drum pads with tri-colour backlighting and roll mode
- Large (75 x 32 mm) multifunction LCD displaying DAW data directly
- Standard transport control set
- Arpeggiator with pad-based rhythm editor
- Very simple installation procedure

About This Manual

We don't know whether you've got years of experience with using MIDI, or if this is your very first keyboard controller. In all probability, you're somewhere between the two. So we've tried to make this manual as helpful as possible for all types of user, and this inevitably means that more experienced users will want to skip over certain parts of it, while relative novices will want to avoid certain parts of it until they're confident they've mastered the basics.

However, there are a few general points that are useful to know about before you continue reading this manual. We've adopted some graphical conventions within the text, which we hope all types of user will find helpful in navigating through the information to find what they need to know quickly:

Abbreviations, conventions, etc.

Where top panel controls or rear panel connectors are referred to, we've used a number thus:  to cross-reference to the top panel diagram, and thus:  to cross-reference to the rear panel diagram. (See page 7 and page 9).

We've used **BOLD** to name physical things like top panel controls and rear panel connectors, and also to name on-screen buttons which you need to click, and `LCD dot-matrix text` to denote text which appears on the LCD.

Tips



These do what it says on the tin: we include bits of advice, relevant to the topic being discussed that should simplify setting up Impulse to do what you want. It's not mandatory that you follow them, but generally they should make life easier.

What's In The Box

The Impulse has been carefully packed in the factory and the packaging was designed to withstand rough handling. Should the unit appear to have been damaged in transit, do not discard any of the packing material and notify your music dealer.

Save all the packing materials for future use if you ever need to ship the unit again.

Please check the list below against the contents of the packaging. If any items are missing or damaged, contact the Novation dealer or distributor where you purchased the unit.

- Impulse MIDI controller keyboard
- Getting Started Guide
- Registration card (register your Impulse and access your free software bundle)
- USB Type A to Type B cable (2m)

Power Requirements

Impulse is powered via its rear panel USB connector. Normally, DC power will be supplied by the computer to which Impulse is connected through a standard USB cable. We recommend that you connect Impulse directly to a computer's native USB port, and not via a USB hub. Correct operation cannot be guaranteed if a hub is in use.

If you wish to use Impulse as a stand-alone MIDI controller for other hardware MIDI sound sources (or other devices) *without* a computer – as you might in live performance, for example – you should obtain an AC-to-DC USB mains adaptor, which you should plug in to Impulse's USB port in the same way as a standard USB cable. When using this method, please ensure that your local AC supply is within the range of voltages required by the adaptor **BEFORE** you plug it into the mains. Please contact your Novation dealer for advice on suitable mains adaptors if you are in any doubt.



A word about laptops:

When powering Impulse from a computer, you should be aware that although the USB specification agreed by the IT industry states that a USB port should be able to supply 0.5 A at 5 V, some computers - particularly laptops – are unable to supply this current. Unreliable operation may result in such a case. When powering Impulse from a laptop's USB port, it is recommended that the laptop is powered from AC mains rather than its internal battery.

Glossary

Certain terms are used throughout this User Guide which may be new or unfamiliar to some users. We have listed a few of them here to help you understand the Guide more easily.

Arp

Short for Arpeggiator, an Impulse feature. Arp mode lets you set up rhythmic patterns of notes using the drum pads, and modify them in real time (great for live performance!), changing the pattern length, the pattern itself and the way certain notes are accented.

Clip launch

This is a term specific to Ableton Live including the Lite version supplied with Impulse. Within Ableton Live Lite, a Clip is essentially a sound file (of any duration) which can be assigned to any DAW Track. Provision has been made for launching Clips directly from drum pads on Impulse.

DAW

Digital Audio Workstation. An alternative term for your music creation/recording/editing software.

Plug-in

A Plug-in is a software add-on which gives a DAW additional functionality and is typically used to either generate or process sounds. Many are emulations of hardware devices. A plug-in may be 'native' – supplied as part of the DAW application, or 'third-party' – purchased by the user separately to work within the DAW.

Roll

A variant of Arp mode, Roll is another mode suited for live performance, and lets you repeatedly trigger specific sounds from the drum pads, with velocity sensitivity.

Template

A Template defines how your Impulse will operate. When you load a template, all Impulse's own settings and parameters will be set to whatever the template dictates. If you subsequently change settings, you can resave the amended set of data to the template, and your amendments will be restored next time you load the template. Impulse is supplied with 20 'factory' templates which configure it for use with particular DAWs and/or Things.

Thing

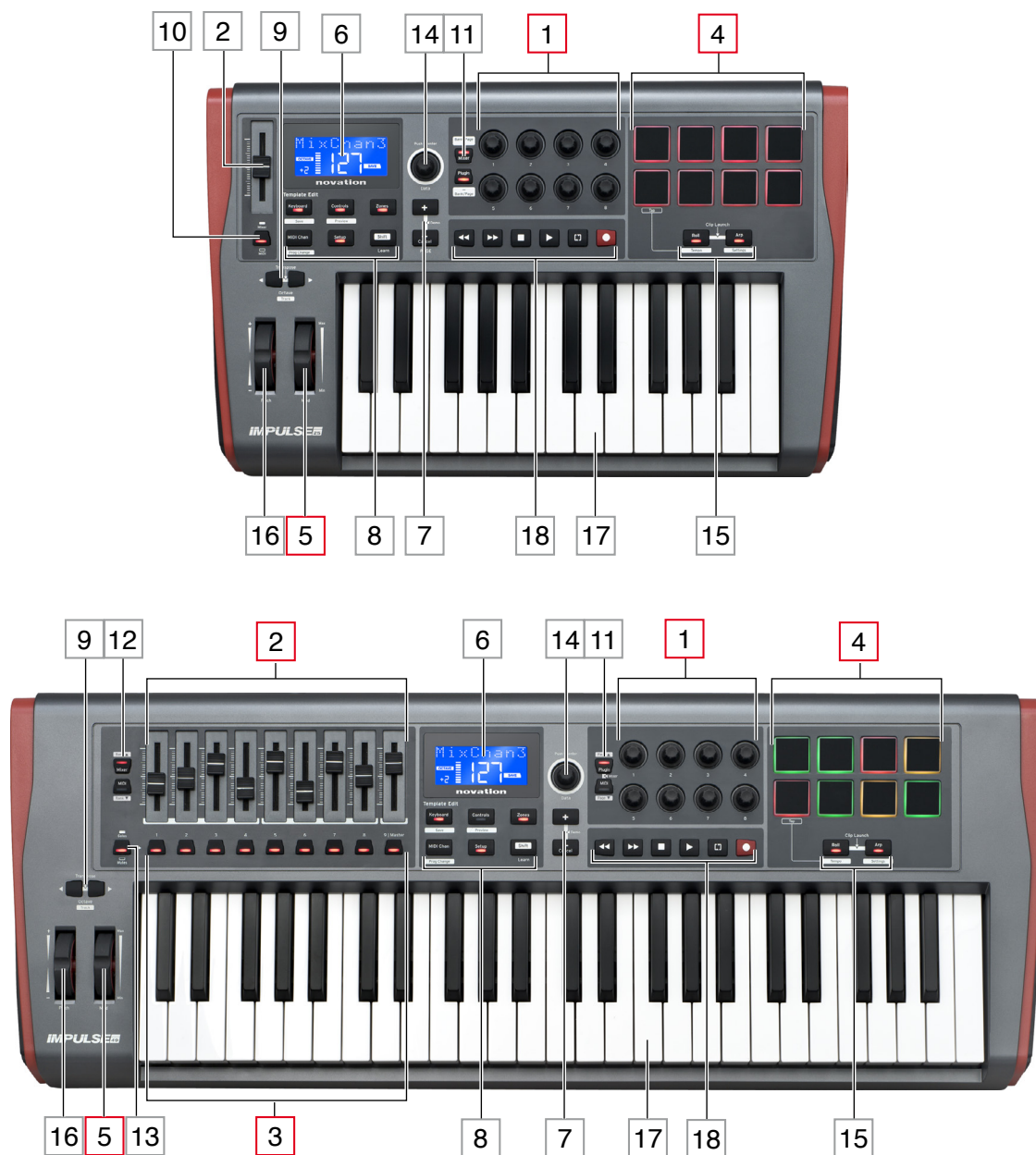
A Thing is anything that can be controlled by Impulse. A Thing may be hardware or software. Examples of Things are the plug-ins you use in your DAW, your DAW's track mixer and external, MIDI-controllable synths or FX processors.

Zone

It is possible to split Impulse's keyboard to create four keyboard 'zones'. You have full control over where the split points are. This is a useful feature in live performance, as it allows you to use different parts of the keyboard to control different instruments, or layer one sound on top of another.

Hardware Overview

Top View – assignable and non-assignable controls



Each of Impulse's controls is either *assignable* or *non-assignable*. Assignable controls are 'free' – their function will vary according to which plug-in, DAW mixer or additional piece of MIDI hardware is being controlled. Their assignment to a particular parameter of the Thing being controlled will either be made manually by you. Non-assignable controls are 'fixed' – their function will generally always be the same regardless of what sort of setup you are using Impulse with.

Assignable controls:

- 1 8 x rotary encoders. These are ‘360°’ controls with no end stops, and are used to control plug-in parameters. These controls have speed-dependent resolution, so turning the encoder slowly gives finer resolution than turning it quickly.
- 2 9 x 45 mm faders (slider controls), used to control volumes in your DAW mixer.¹
- 3 9 x press-buttons.²
- 4 8 x pressure-sensitive drum pads. These can be used to trigger sounds (i.e., drums) in your music software, and also to control Impulse’s “Arp”, “Roll” and “Clip Launch” functions
- 5 **Mod** (Modulation) wheel.

¹ Impulse 49 and 61 only. Impulse 25 has one assignable fader.

² Impulse 49 and 61 only. There are no assignable buttons on Impulse 25

Non-assignable controls:

- 6 Multifunction LCD display. Shows information contextually – i.e., will give you the most useful data depending on which controls you’re currently using.
- 7 **+ / –** buttons. These are used in conjunction with the various menus, to scroll through available options, etc. Precise function varies with menu. Pressing these buttons together enables Help mode.
- 8 Template Edit buttons. A set of four buttons (**Keyboard**, **Controls**, **Zones**, and **MIDI Chan**), which select the different menus used when modifying templates. A fifth button, **Setup**, permits global settings, and a sixth, **Shift**, enables secondary functions for some of the other buttons.
- 9 **Octave > / Octave <** buttons – shift the notes played from the keyboard ‘up’ or ‘down’ in octave steps. Pressing the two buttons together lets you transpose the keyboard in semitone increments. The number of octaves over which the keyboard can be shifted varies with Impulse model; the smaller models have a greater shift range.
- 10 **MIDI/Mixer** button (Impulse 25 only) – sets Impulse 25’s single fader to be either a control for a DAW mixer level, or an additional assignable MIDI control.
- 11 **Plug-in/MIDI** buttons – these determine whether the eight rotary encoders vary specific plug-in parameters, mixer controls, or act as general purpose MIDI controllers.

12 Mixer/MIDI buttons (Impulse 49 and 61 only) – these determine whether the nine faders act as volume controls for individual tracks within a DAW mixer, or as general purpose MIDI controllers. Pressing **Mixer** or **MIDI** while holding down **Shift** will scroll the set of DAW mixer faders being controlled through eight channels at a time.

13 Mute/Solo (Impulse 49 and 61 only) – this sets the nine per-fader buttons **3** to act as either Mute or Solo buttons for their respective mixer channel when this section is used in mixer mode only.

14 Data knob – this is a rotary encoder used for selecting options or altering values in the Impulse's menu system. The knob includes a 'press' action which performs an 'Enter' function in the menus.

15 Roll and Arp buttons – these place Impulse's drum pads into Roll and Arp modes respectively. The buttons also have Shift functions, and pressing them together activates Impulse's Clip Launch function for Ableton Live.

16 Pitch wheel – standard pitchbend wheel, spring-loaded to return to centre detent position.

17 Keyboard – Impulse is available in 25-, 49- or 61-note versions. The keys are semi-weighted and output channel aftertouch.

18 Transport controls - these provide remote control facilities for DAW transports.

Rear view – connections



1 USB port – USB Type B connector compatible with USB 1.1, 2.0 or 3.0. Connect the Impulse to a USB port on your computer using the USB cable supplied. Alternatively you can connect a USB AC-to-DC adaptor here if using Impulse away from a computer.

2 Sustain and Expression – two 1/4" jack sockets for the connection of standard sustain and expression pedals.

3 MIDI In and MIDI Out – standard 5-pin DIN sockets allowing you to connect to external MIDI hardware such as additional sound modules.

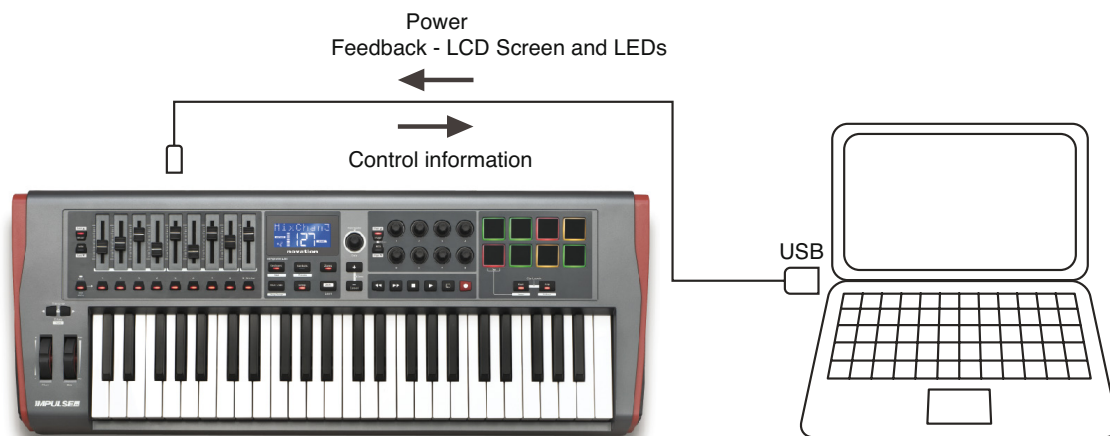
4 Kensington security lock – secure your Impulse to a convenient structural point if desired.

IMPULSE SETUP EXAMPLES

There are two basic ways of using Impulse: with or without connection to a computer.

Interfacing to a computer

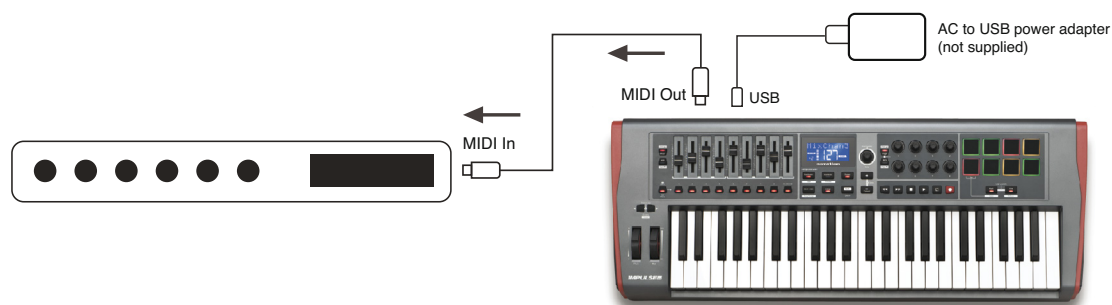
If you are intending to use Impulse with your computer music software, the physical connection is a simple USB cable between Impulse and a USB port on the computer.



Manual mapping mode

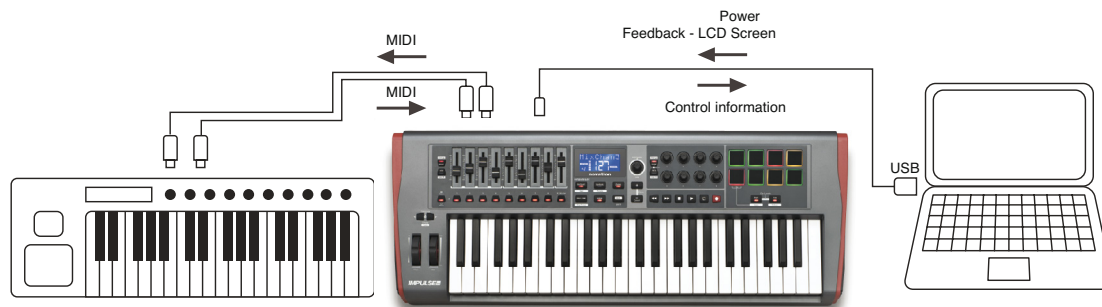
This method of interfacing is recommended for advanced users only. Impulse is connected to your computer in the same way, but is used as a general purpose MIDI controller for your plug-ins, etc., by you making all the control assignments individually. Thus you can create custom templates to suit your precise method of working.

Interfacing to MIDI hardware



You can also use Impulse to directly control other MIDI-compatible hardware, such as sound modules, FX processors, and so on. To do so, use the standard MIDI ports on the Impulse rear panel and standard 5-pin DIN MIDI cables. As there is no computer to supply Impulse with DC power, you will need to use a separate AC-to-DC adapter designed for USB-powered devices. This is the arrangement you might want to employ in live performance, for example, to avoid the need for an on-stage computer.

Using external hardware and a computer together



You may wish to use your music software and one or more hardware devices, such as your favourite sound modules, etc., as well as Impulse. In this situation, you can make use of both the USB and DIN ports for MIDI data transfer. The USB port will connect to your computer in the normal manner, while the DIN ports will connect to the external hardware. Impulse lets you select whether the external devices are to be controlled by the computer, or from Impulse. See “Midi Out Source” on page 16.

MENU OVERVIEW

Most of the configuration and setting up of Impulse is carried out through the menu system and the LCD screen. The menu system is also used to modify templates.

LCD features and Menu Navigation


Whilst the menus themselves vary with function, there are a number of basic principles which always apply.




The upper 8-character row of the display shows the Impulse parameter or setting being adjusted. The 3 large characters in the lower row show the parameter value or setting itself. In any of the menus, you can scroll through the available pages with the + and – buttons.




The + and – symbols at the right hand side of the display tell you if there are further pages, and in which direction.

On any menu page, the **Data** knob , is used to vary the parameter value or setting. Some settings – e.g., Aftertouch in the **Keyboard** menu – have only two values – ‘On’ and ‘Off’. Others have a full ‘analogue’ range of values, usually from 0 to 127. The effect of changing a parameter is immediate and is remembered when you exit the page or menu.

Computer Connected icon

The Computer Connected icon  confirms that Impulse is communicating correctly with the computer, and a plug-in or DAW mixer is available. The icon will be off if you are using Impulse without a computer, or when it's connected to a computer, but no controllable DAW mixer or plug-in is available.

Active Control

The Control icon  illuminates when an assignable control (e.g., rotary encoder, fader, button or pad) is moved. The 3-character display below the flag confirms the control you're touching; Fd = Fader, En = rotary encoder, dF = trigger (drum) pad, followed by the number of the control (1 to 8). The adjacent vertical 'bargraph' display represents the control value.

EXPLORING IMPULSE

Impulse is a fully assignable MIDI controller keyboard, whose operation revolves around the concept of *templates*. A template (see Glossary) tells Impulse ‘what to do’ – it defines how it is set up in terms of things like its MIDI parameters, keyboard zone limits, configuration of controls, and so on. There are 20 default, pre-defined templates available*; some of these have been created for use with specific software or hardware devices. However, any of these may be modified for your own use if you wish.

*A table listing the default templates can be found in the Appendix section of this manual.

Getting Impulse to work the way you want it to ultimately comes down to editing these templates. For example, you will probably want to use Impulse in quite a different way in your studio for recording with your music software from how you use it in live performance. It is likely that you would use different templates for these two ways of working.

Loading and Saving a Template



From the default screen (i.e., with no button LEDs lit in the Template Edit section), rotate the **Data** knob [14] or press the **+ / -** buttons [7] until the number of the required template is displayed (1 to 20). The template is active as soon as its number is displayed. Note: To select a template if MIDI parameter values are currently displayed, use the **+ / -** buttons. Alternatively you can press any of the **Keyboard**, **Controls**, **Zones**, **MIDI Chan** or **Setup** buttons twice to access the template screen.

When you have modified MIDI parameters for any of the controls, you must save your changes to the template currently selected. (A SAVE element will light in the display to prompt you to do so.) The Save function is invoked by holding the **Shift** button down and pressing the **Keyboard** button. This opens a confirmation screen containing the Template Name, which you can edit one character at a time, if you wish.



The character to be edited is the one with the flashing cursor; use the Data knob [14] to alter the character, and the **+ / -** buttons [7] to shift the character position. When you have finished editing the name, press **Enter**, and a **SaveTPl?** (Save Template?) confirmation screen appears.

If you are happy that you are saving the altered name to the correct template, press **Enter** again. (Before pressing **Enter**, you can use the Data knob to choose a different template to which the new name will be applied, if you wish.)

Note that if you make changes to a template but do not save those changes, when you try to load a different template, Impulse will display a message: **Discard?** Use the **Data** knob to select either **No** or **Yes**, and press **Enter** to confirm. If you select **Yes**, your changes will be lost

Help Mode

Pressing **+** and **-** buttons [7] together enables Help Mode. It is confirmed by **HLP** in the display. In Help mode, pressing any control generates a scrolling text message in the display, reminding you of what the control does and how to use it.

Configuring Impulse Controls



As each template can contain an entire set of configuration settings, make sure you are in the correct template before changing any MIDI parameters. Pressing the **Controls** button [8] enters Control Edit mode, with the display as shown, and the **Controls** button LED lit. Press **Controls** a second time to exit the mode.



Operating any assignable control – e.g., faders 1-9*, buttons 1-9*, encoders 1-8 or the drum pads – makes the display show parameter for that control. The selected control number is displayed, for example **Fd3** (Fader 3) or **Bt5** (Button 5).

MIDI parameters can be selected by pressing the **+** and **-** buttons [7] with parameter values set with the Data knob [14].

Note that the MIDI parameters available vary with control type: faders, rotary encoders, the mod wheel, drum pads and buttons all have different menu pages. Most of the pages' functions will be self-evident, but a full list of all the available parameters for each control type, and their ranges of operation can be found in the section 'Assignable Controls – Parameters and Ranges' on page 34 of this user guide.

Note: do not forget to save your changes to the current template.

* Impulse 49 and 61 only.

Preview



Preview mode is provided to confirm how a control is currently configured without actually transmitting any MIDI data to your computer or elsewhere. Enter Preview mode by holding down **Shift** and pressing the **Controls** button. The LED in the **Controls** button blinks to confirm the mode. Pressing or moving any of the assignable controls will display its MIDI message type. Pressing the **Controls** button again will exit Preview mode.

Setup Mode

Setup mode lets you adjust certain global controller settings. In this context, 'Global' means settings which apply to ALL templates. Setup mode is entered by pressing the **Setup** button; its LED illuminates to confirm the mode. Setup pages can be selected by pressing the **+/-** buttons **7** with settings in each adjusted using the Data knob **14**.



Page 1: Transport (Transport)

This setting lets you select whether DAW transport control commands will be transmitted as MIDI Machine Control (MMC) data (MC), or as Continuous Controller data (CC). When set to MMC, each transport button will send the appropriate standard MIDI command. If your DAW responds to MMC commands this is the best setting. If not, set this to CC. The transport buttons will then need to be 'learnt' to the corresponding DAW transport functions.



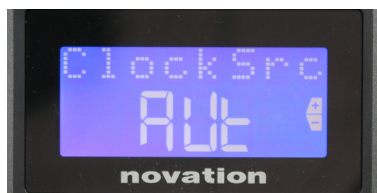
Page 2: Pad Curve (PadCurve)

This selects one of three velocity tables (1 to 3) which change the velocity response of the pads to the initial force applied to them as they are hit. Pad Curve 2 is the default, and should be acceptable for most playing styles. Using the same amount of force, setting PadCurve to 1 will output lower note velocities and conversely a setting of 3 will result in higher note velocities being transmitted. When set to Off, the note velocities will always be fixed at 127.



Page 3: Tempo (Tempo)

This sets the tempo of Impulse's internal MIDI clock, in BPM. This can be useful in live performance for arpeggiator and roll timings. The range is 40 to 240, with a default value of 120 BPM.



Page 4: Clock source (ClockSrc)

This setting selects the source for Impulse's clock synchronisation, which is used for the Arpeggiator and Roll functions. The options are: Internal (Int.), USB (Usb), MIDI (Mid) or Auto (Aut). In Auto setting, the setting reverts to Internal when no USB sync source is present; note that Auto mode ignores any clock signal that may be present at the **MIDI In** DIN socket. Also, Auto mode will ensure that the internal clock will continue to run at the 'last-known' external clock rate should the external USB clock source fail.



Page 5: MIDI Out source (DIN From)

This setting determines whether an external device connected to the DIN **MIDI Out** socket will receive its MIDI commands locally from Impulse (Loc) or from your computer (Usb). This is a useful feature when you are using both music software and additional external devices such as synths. The default setting is local (Loc).



Page 6: SysEx Data Dump (DUMPSYX?)

With this option selected, pressing **Enter** 14 will let you download all Impulse's current internal settings for the currently active template. This is a useful exercise for backup security, or for transferring a template to another Impulse.

Note – There is no need to enter any specific 'mode' to import SysEx data. Impulse is always in 'read' mode; it is only necessary to transmit the SysEx data (either from another Impulse or from a computer using a MIDI SysEx utility). The imported data is initially loaded into a RAM buffer; when you are happy that the transfer is complete you can then overwrite (save) the template data into the desired template location.

Keyboard Settings

Primary keyboard parameters can be set in Keyboard mode, which is entered by pressing the **Keyboard** button [8]; the LED in the button confirms the mode. Keyboard settings are per-template, so be sure you are working with the correct template before entering this mode. Keyboard settings pages can be selected by pressing the **+/-** buttons [7] with the settings in each adjusted with the **Data** knob [14].



Page 1: Midi Port (MIDI Port)

This lets you set the MIDI port to be used with the currently-selected template. Options are: USB (Usb), MIDI (Mid) or All (ALL). The default is All (i.e., both USB and the DIN MIDI ports).



Page 2: Keyboard Velocity Curve (VelCurve)

This selects one of four velocity tables (1 to 4) Velocity curve 2 is the default, and should be acceptable for most playing styles. Using the same amount of force, setting VelCurve to 1 will output lower note velocities when compared to the higher settings of 3 or 4. When set to Off, all notes played from the keyboard have a fixed velocity of 127.



Page 3: Aftertouch (Aftertouch)

Impulse's keyboard is equipped with Channel Aftertouch, which sends an additional set of MIDI data when further pressure is applied to a key while it is being pressed. The options are **On** or **Off**. The default setting is **On** as many plug-ins use Aftertouch, but in some situations, you may prefer to switch it off.

MIDI Channel



MIDI data can be sent on any one of 16 channels, and will only be received and interpreted correctly if the receiving device is set to the same channel. Press the **MIDI Chan** button to set the channel number.

Use the Data knob to change the MIDI channel number from the default of 1. Note that MIDI channel numbers are part of the template, and therefore any changes must be saved to the template as described above (see “Loading and Saving a Template” on page 13).

Zones

Normally Impulse’s keyboard uses the same MIDI channel for all its notes. Using Zones, it can be split into 2, 3 or even 4 separate or overlapping regions. Each Zone can have its own MIDI channel, port, and keyboard range. This feature can be of tremendous benefit when playing live.

Press the **Zones** button to enable and configure keyboard zones; the LED in the button lights to confirm the mode.



Page 1: Zones Enable (KbdZones)

Use the data entry knob to select **On** or **Off** (default). When Zones are set **On**, a **ZONES ON** element lights in the display to remind you that Zones are enabled.



Page 2: Zone 1 Start (Z1 Start)

There are two methods of selecting the lowest note in the Zone: i) press the note on the keyboard, and its note name will be displayed; ii) use the data knob to scroll through the list of available notes.



Page 3: Zone 1 End (Z1 End)

You can set the upper note of the Zone in the same manner as the lowest.



Page 4: Zone 1 Octave (Z1 Octav)

This enables you to change the octave that the keys in the zone will play. A setting of 0 (the default) means that the notes in the zone will play at their normal pitch. Note that the range of octaves available varies between the three Impulse models.



Page 5: Zone 1 MIDI Channel (Z1 Chan)

Each Zone can use a different MIDI channel, enabling you to play different sound sources from different parts of the keyboard. You can set the Zone to any of the 16 standard MIDI channels, or select tPL, when the Zone's MIDI channel will follow that set in the current template.



Page 6: Zone 1 Ports (Z1 Ports)

As well as selecting a different MIDI channel for each Zone, you can also set the MIDI Port each Zone uses. The options are: Template (tPL) – the port will be that set in the current template; USB (Usb) – the USB port will be used; MIDI (Mid) – the DIN sockets will be used; All (ALL) – both USB and DIN ports will be used; Off (Off) – the Zone is disabled.

Pages 7 to 21: Zones 2 to 4

The remaining pages in the Zones menu repeat the settings available for Zone 1 in Pages 2 to 6.

Program Change



You can manually transmit a MIDI Program Change message from Impulse. Press **Shift + MIDI Chan** to enable **Prog Change** mode.

Select the Program Change number with the Data knob and the MIDI data will be transmitted. Note: Program Change MIDI values are automatically transmitted as the Data knob is turned – i.e., this makes it possible to browse through patches simply by turning the knob. Press **Enter** to exit this mode and revert the screen to the normal display.

Transport Controls

Impulse is provided with a standard set of six ‘transport’ controls ¹⁸, which can be used to start, stop, relocate, etc., within your DAW’s timeline. They act as a convenient remote control for the software and duplicate the on-screen buttons.



The transport buttons are always active, but your DAW will need to be set correctly to respond to their commands. Also, you will need to ensure that they are set to send the correct type of MIDI message – MIDI Machine Control or Continuous Controller – for the DAW. (See “Setup Mode” on page 15)

Arpeggiator

Impulse has a powerful Arpeggiator feature which allows arpeggios of varying complexity and rhythm to be played and manipulated in real-time. If a single key is pressed, the note will be retriggered by the Arpeggiator. If you play a chord, the Arpeggiator identifies its notes and plays them individually in sequence (this is termed an arpeggio pattern or ‘arp sequence’); thus if you play a C major triad, the selected notes will be C, E and G.

The Impulse Arpeggiator is enabled by pressing the **Arp** button ¹⁵; its LED will light to confirm and the eight drum pads will turn green. Holding a note down will repeat the note in the sequence, and you will see the pads’ illumination changing as the pattern progresses. Initially all enabled beats in the sequence are sounded, but if you press a pad, the beat corresponding to that pad’s position will now be omitted from the sequence, generating a rhythmic pattern. The ‘deselected’ pads will show red instead of green. A ‘deselected’ pad may be re-enabled by tapping it a second time. The pads are velocity-sensitive, and how hard the pads are hit, when being enabled determines the velocity of the note in the sequence. The initial default state is for all notes in the sequence to be at equal velocity.



Arpeggiator Settings menu

Various parameters controlling the Arpeggiator's operation can be set in the Arpeggiator Settings menu, which is entered by holding down the **Shift** button and pressing **Arp**; the LED in the **Arp** button flashes in this mode.



Page 1: Sync (Sync 1/x)

This parameter effectively determines the beat of the arp sequence, based on the tempo rate. The sync rate is adjusted with the Data knob and can have any of 12 values from 1 beat to 96, which correspond to divisions of the tempo rate.



Page 2: Gate (Gate)

This parameter sets the basic duration of the notes played by the Arpeggiator, though this may be further amended by the Swing parameter (see below). The lower the parameter value, the shorter the duration of the note played. At a setting of 100, each note in the sequence is immediately followed by the next without a gap. At the default value of 50, the note duration is exactly half the beat interval as set by the tempo rate, and each note is followed by a rest of equal length. Values over 100 will cause the notes to 'overlap'.



Page 3: Swing (Swing)

If this parameter is set to something other than its default value of 50, some further interesting rhythmic effects can be obtained. Higher values of Swing lengthen the interval between odd and even notes, while the even-to-odd intervals are correspondingly shortened. Lower values have the opposite effect. This is an effect which is easier to experiment with than describe!



Page 4: Arp Mode (Arp Mode)

The Arpeggiator will play all notes held down in a sequence which is determined by the Arp Mode setting. The options are:

- **Up** (uP) - sequence begins with the lowest note played
- **Down** (dn) - sequence begins with the highest note played
- **Up/Down 2** (ud2) – sequence alternates in direction and repeats the highest and lowest notes
- **Chord** (crd) – all keys held are played simultaneously as a chord
- **Up/Down** (uPd) – sequence alternates in direction
- **Random** (rnd) – the keys held are played in a continuously varying random order
- **Key Order** (FLY) – sequence comprises notes in the order in which they are played



Page 5: Arp Octave (Arp Octv)

This setting adds upper octaves to the arp sequence. If Arp Octave is set to 2, the sequence is played as normal, then immediately played again an octave higher. Higher values of Arp Octave extend this process by adding additional higher octaves. Arp Octave values greater than 1 have the effect of doubling, tripling, etc., the length of the sequence. The additional notes added duplicate the complete original sequence, but octave-shifted. Thus a four-note sequence played with Arp Octave set to 1, will consist of eight notes when Arp Octave is set to 2. You can set Arp Octave to 1, 2, 3 or 4.



Page 6: Arp Length (ArpLngh)

This sets the length of the sequence, and has a default value of 8. Reducing it to a lower value simply reduces the number of notes in the sequence.

Setting the Arp/Roll Tempo

The tempo for Arp and Roll modes is set in the Tempo page of the Setup menu (see “Tempo” on page 16). However, it may also be accessed directly by pressing **Shift + Roll** [8] + [15]; the **Roll** LED and drum pad 5 flash in this mode. Alternatively, you can set the tempo ‘manually’, by tapping a steady beat on drum pad 5. Note that tapping out a tempo in this way is only possible if Clock Source is set to Internal (see “Clock Source” on page 16).

Note that by pressing **+**, you can also access the Clock Source settings menu page from here.

Press **Roll** again to cancel and return to default display.

Roll Mode

Roll mode gives you a convenient method of repeatedly triggering a single note – typically a percussive effect such as a drum sound. Enable Roll by pressing the **Roll** button [15]. The Roll button LED illuminates and the drum pads glow red. Pressing a drum pad will now trigger the sound assigned to it for as long as the pad is pressed. The pads' velocity-sensing is still active – the volume will be proportional to the pressure applied to the pad. See also “Pad Curve” on page 15.



Certain arp parameters (set in the Arpeggiator Settings menu – see page 21) have an effect on the rhythmic pattern of the roll.

Boot Menu

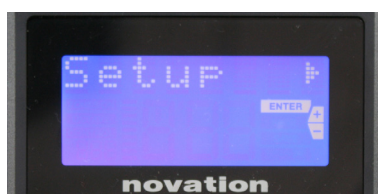
The boot menu will not be required in normal operation, but is there to let you update Impulse's firmware, check firmware version numbers and also to reset all the settings to the original factory values.

Boot menu is entered by holding down the **+**, **-** and **Shift** buttons simultaneously while applying power – i.e., while plugging in the USB cable.



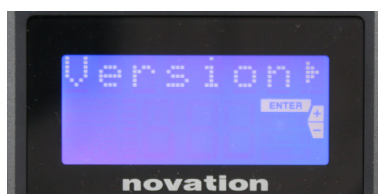
Page 1: Exit (Exit)

Press Enter to leave the boot menu.



Page 2: Setup (Setup)

This is related to the Impulse model and is for factory use only. Do not alter this setting! A long press on the **-** button (Cancel) will exit this level.



Page 3: Version (Version)

Pressing **Enter** shows the firmware version of the Boot

Program; press the **+** button to see the version number of the main firmware program. A long press on the **–** button (Cancel) will exit this level.



Page 4: Restore Factory defaults (Fac Rst)

This will restore all Impulse's internal settings to their original factory values. Any changes you have made will be lost. Pressing **Enter** will give you a confirmation screen (Really?) to give you one more chance to change your mind! Press **Enter** again to continue, or a long press on the **–** button (Cancel) will exit this level.

USING IMPULSE WITH HUI

Introduction

The HUI protocol allows the Impulse to act like a Mackie HUI device and interact with DAWs that provide HUI support (for example, Cubase, Studio One, Reaper and Pro Tools).

HUI Connection

From the standard template mode, the Impulse automatically switches to HUI view as soon as it detects a Heartbeat message (sent by a DAW once settings are configured). If the Impulse does not receive a heartbeat message for over five seconds, it automatically switches back to standard template mode.



While in HUI mode, a connection icon will appear on the screen, and the Mixer / Plugin buttons will illuminate.

It is possible to individually release either the fader section or the encoder section from HUI mode without breaking the HUI connection, while retaining the remaining HUI functionality.

Releasing/re-entering the fader section from HUI mode

To release the fader section from HUI mode, press the MIDI button beside the fader section. The MIDI button will become lit while the mixer button will become unlit, signalling the mode release. To re-enter HUI mode, press the Mixer button.

Note that Impulse 25 only has a single Fader section button which will toggle between the aforementioned modes. When the button is lit the fader is in HUI mode, when the button is unlit the fader is in standard template mode

Releasing/re-entering the encoder section from HUI mode

To release the encoders from HUI mode, press the MIDI button beside the encoder section. The MIDI button will become lit while the Plugin button will become unlit, signalling the mode release. To re-enter HUI mode press the Plugin and MIDI button at the same time.

Channel Control

Volume

You can change Volume with the first eight faders of Impulse. The 9th fader (or the only fader on Impulse 25) sends CC#7 message on Impulse's MIDI port.

Pan

You can change a channel's Pan position using the rotary encoders.

Mute/Solo

The first eight soft buttons under the faders can be used to control Mute or Solo functions on individual channels. The Mute/Solo button can be used to toggle between Mute and Solo control and display. Depending on the DAW you are using, buttons LEDs may behave differently. For example, in Pro Tools, if a track is soloed then the others will flash. Note that Impulse 25 doesn't have any solo/mute buttons.

Send Control

Press Shift + Plugin/MIDI to change the encoder assignment to control send levels.

Transport Control

The Transport buttons control the equivalent DAW functions. While mostly similar, the function of each button depends on the DAW. Generally, the functionality is (from left to right) as follows: Rewind, Fast-Forward, Stop, Play, Loop On/Off, Arm/Record.

Track Left and Right

This moves the currently controlled bank (8 channels) one channel to the left or right. Press Shift + Octave Down to move left or Shift + Octave Up to move right.

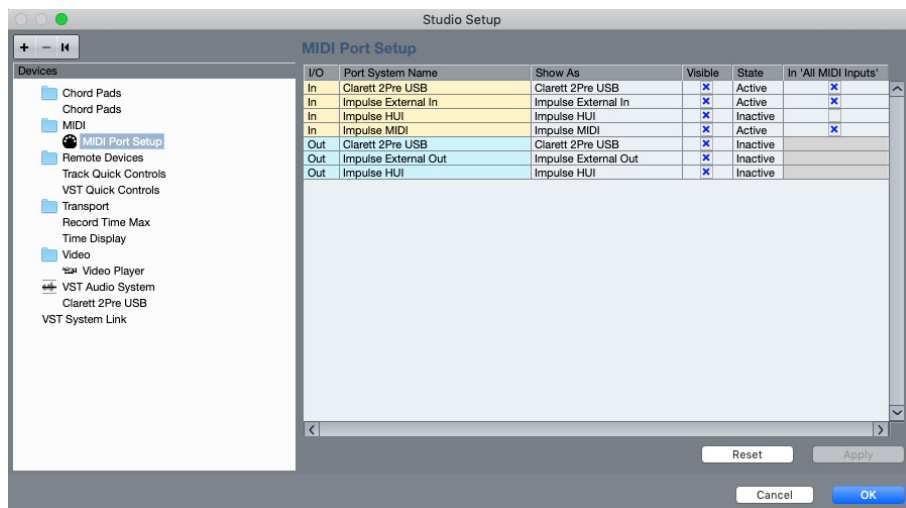
Bank Up and Down

This moves a full bank up or down. Shift + Mixer triggers Bank up or Shift + MIDI triggers Bank down.

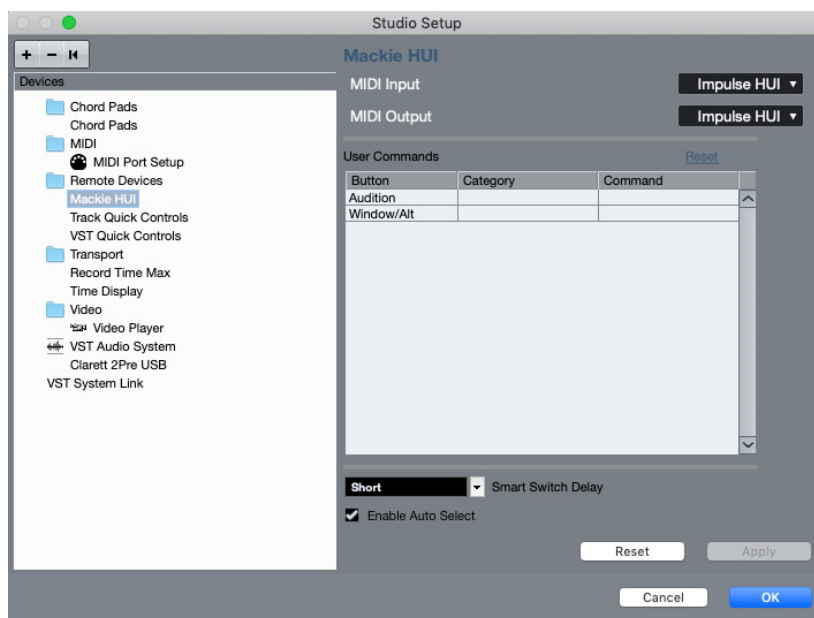
DAW Setup

Cubase

To set up the Impulse as a HUI control surface in Cubase, navigate to 'Studio' > 'Studio Setup' > 'MIDI Port Setup'. Be careful to set your ports as shown below, the 'Impulse HUI' port **MUST** NOT have "in 'all MIDI ins'" enabled.



Click the small '+' icon in the Cubase 'Studio Setup' window and select 'Mackie HUI'. Now, in the 'Mackie HUI' tab, set the input and output port to 'Impulse HUI' as shown below.

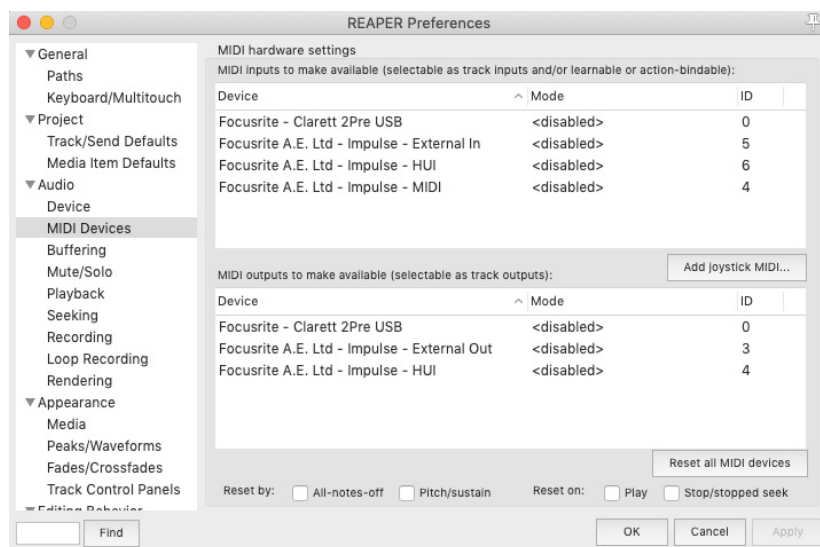


Note: The 'Impulse HUI' port may show as 'MIDIIN3'/'MIDIOUT2' or something similar on Windows.

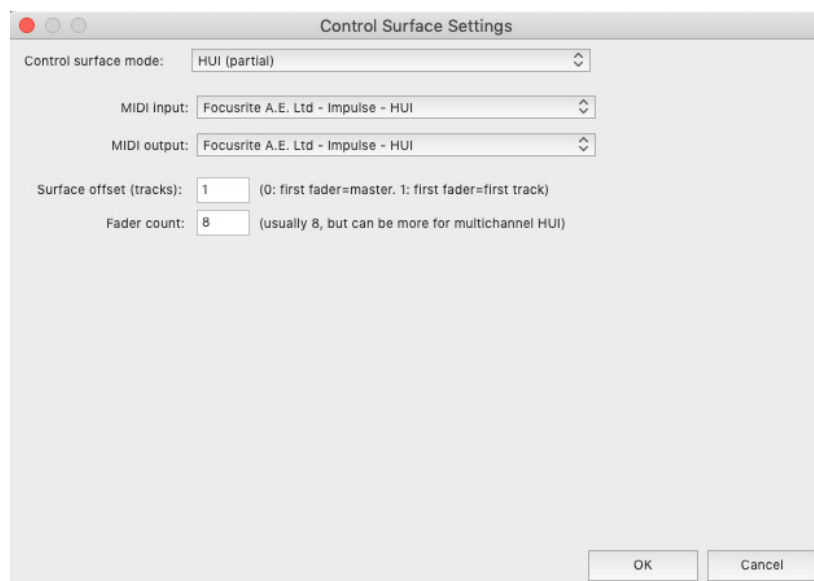
Reaper

Please note that Reaper version 5.941 or newer is required to work with the Impulse.

To set up the Impulse as a HUI control surface in Reaper, navigate to 'Options' > 'Preferences...' > 'MIDI Devices'. Be sure to set your ports to 'Focusrite A.E. Ltd. - Impulse HUI (MIDIIN3 for Windows)', as shown above, the 'Focusrite A.E. Ltd. - Impulse HUI' should not say '!! N/A...'. If this is the case please right-click the device and choose 'Forget device'.

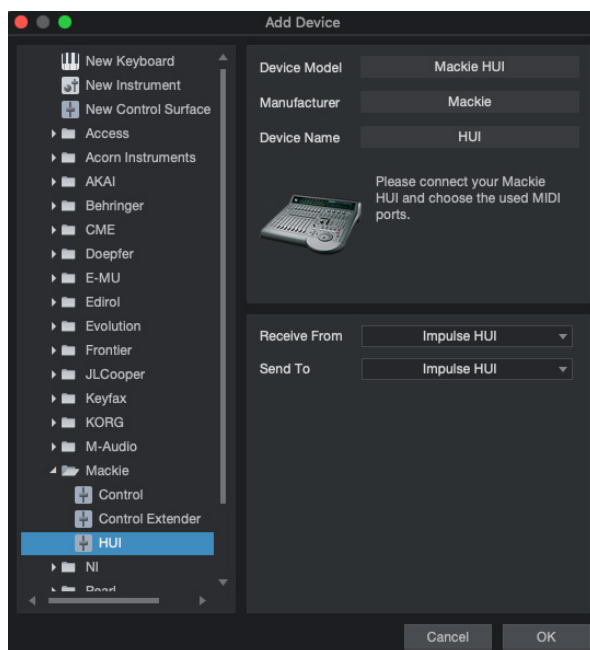


Navigate to the 'Control/OSC/web' tab in the 'Reaper Preferences' window and click 'Add' to add a new control surface. Now, in the 'Control Surface Settings' window, set the Control surface mode to HUI (partial) and set the input and output port to 'Focusrite A.E. Ltd. - Impulse HUI' as shown below.



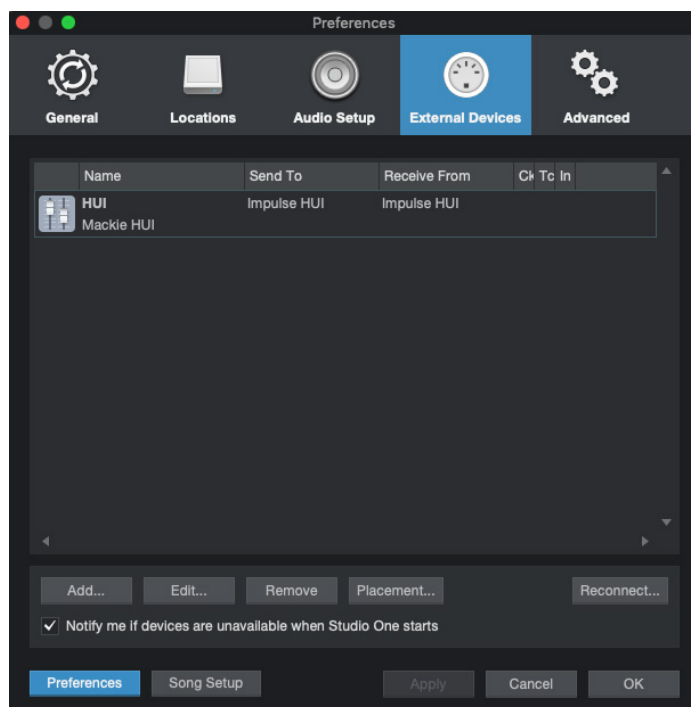
Studio One

To setup the Impulse as a HUI control surface for Studio One, navigate to 'Preferences' > 'External Devices' and click 'Add' to add a new device. Now, in the 'Add Device' window, select HUI under the Mackie folder and set Studio One to receive from 'Impulse HUI' and send to 'Impulse HUI' as shown below.



On Windows, Studio One should receive HUI messages through MIDIIN3 and send to MIDIOUT2.

Press OK and the Preferences-External Devices Menu should look as shown below.



Pro Tools

To set up the Impulse HUI in Pro Tools, navigate to 'Setup' > 'Peripherals...' > 'MIDI Controllers'. Ensure your ports are set up as below. Set Type to 'HUI', Receive From/Send To to the 'Impulse HUI' port (MIDIIN 3/MIDIOUT2 on Windows) and # Ch's to 8.



DAW GUIDE

We're assuming that you are already quite familiar with the operation of your favourite DAW. Because there are some differences in the way in which particular DAWs works with Impulse, you should look at the Support page of the Novation website (novationmusic.com/support), where you'll find specific guidance on using Impulse with different DAWs.

Ableton Live and Clip-launch mode (Mac or Windows)

Ableton Live is a music software package which you will find bundled with Impulse. This contains instructions on how to install it on your computer; there is also some additional information in the Impulse Getting Started Guide.

There are some general points to note regarding the operation of Ableton Live Lite when using Impulse as a controller.

- When using Impulse 25 in **Mixer** mode, the rotary encoders will adjust the same parameter on each track in a Bank of eight, the Bank depending on which Track is currently selected in Ableton Live Lite. Thus, if Track 5 is selected, Tracks 1 to 8 will be controllable; if Track 11 is selected, Tracks 9 to 16 will be controllable.
- **Page+** and **Page-** let you scroll through the available mixer parameters: Pan, Sends A to D, for the current set of eight Tracks. On Impulse 25 only, Track Volume is also available as a controllable parameter.
- Ableton Live Lite's mixer may be configured with any number of Return channels (A, B, C, etc.), but Impulse only allows control of the first four - Returns A to D.
- On Impulse 25, the single fader will control the volume of the currently selected Track in **Mixer** mode.
- The **Track+** and **Track-** buttons select the 'active' Track in Ableton Live.
- The functions of the Transport buttons vary between Ableton Live Lite's Session View and Arrangement View.

Button	Session View	Arrangement View
Rwd	Steps up one scene	Rwd; Shift+Rwd = return to start
FFwd	Steps down one scene	FFwd; Shift+FFwd = go to end
Stop	Stops	Stop
Play	Play	Play
Loop	Play Selected Scene	Enables/disables Loop function
Rec	Starts Arrangement Recording	Records

- Impulse can be placed in Clip Launch mode by pressing **Roll** and **Arp** buttons simultaneously. This redefines the function of the drum pads, which now trigger the Clips in the currently selected Scene. The pads will illuminate according to the Clip status:
 - Unlit – no Clip present
 - Yellow – Clip available
 - Green – Clip playing/ready to play
 - Red – Clip recording/ready to recordFlashing colours indicate that Ableton Live Lite is awaiting the start of the next bar before acting on the last command.
- Impulse is also compatible with Ableton's Max for Live. All controllers (faders, buttons, encoders, pads) will be fully supported as Max for Live controls, i.e., using the Live API. Wheels, aftertouch and pedals however will not be supported, as they do not interact with Live directly; they simply send MIDI messages.
- Preview mode is provided to confirm how an encoder is currently configured without actually changing any Ableton Live parameters. Enter Preview mode by holding down **Shift** and pressing the **Controls** button. The LED in the **Controls** button blinks to confirm the mode. Moving any of the eight encoders will display its Ableton Live assignment. Pressing the **Controls** button again will exit Preview mode.

TROUBLESHOOTING

For the latest information and assistance with your Impulse please visit:

support.novationmusic.com/

Basic Troubleshooting Examples

- **Impulse will not power up properly when connected to a laptop computer via USB.**
When a USB connection is used to power the Impulse from a laptop computer the Impulse may not power up successfully. This is due to the Impulse not being able to draw enough power from the laptop computer. When powering Impulse from a laptop's USB port, it is recommended that the laptop is powered from AC mains rather than its internal battery. See tip on page 5 for more information.
We also recommend that you connect Impulse directly to a computer's native USB port, and not via a USB hub. Correct operation cannot be guaranteed if a hub is in use.
Alternatively, for stand-alone use power the Impulse from a suitable AC:USB DC power adaptor.
- **Transmitting MIDI Program Change does not affect a connected MIDI device.**
Some MIDI devices will not accept Program Change messages without receiving a Bank Select message (CC32 and/or CC0).
- **Impulse cannot be selected as a MIDI device from within an application.**
When opening an application that uses the Impulse as its source of MIDI input and it is found that the Impulse cannot be selected as the MIDI input - either the Impulse is greyed out or it does not appear in a list of available MIDI devices - close the application, wait for 10 seconds, reopen the application and try again.

Under some circumstances it is possible for the Impulse driver to take a few seconds to become active. If an application is started immediately after the Impulse is powered, without a few seconds pause in between powering the Impulse and launching the application, the Impulse driver may not always be available.

FACTORY TEMPLATES

No.	Template	Hardware name (8 chars)
1	Basic MIDI template for standard control and MIDI learn. Avoids commonly used MIDI CCs	BascMIDI
2	Controls send commonly used MIDI CCs	UsefulCC
3	General MIDI Mixer Template. Faders send volume and encoders send pans on different MIDI channels	GM Mixer
4	Ableton Live and Live Lite	Live
5	Propellerhead Reason	Reason
6	Apple GarageBand	GarageBd
7	Apple MainStage	MainStge
8	Novation 'Stations' Template: A-Station K-Station X-Station V-Station KS Xio Bass Station Keyboard Bass Station Rack Super Bass Station Bass Station VST	NovaStat
9	Novation Ultranova	UltrNova
10	Novation Nova, Nova II, Supernova, Supernova II	SupaNova
11	Native Instruments - Kontakt	Kontakt
12	Native Instruments - FM 8 (requires mapping file on DVD)	FM 8
13	Native Instruments - B4 Organ	B4 Organ
14	Native Instruments - Massive (requires mapping file on DVD)	Massive
15	Blank User Template	Blank
16	Blank User Template	Blank
17	Blank User Template	Blank
18	Blank User Template	Blank
19	Blank User Template	Blank
20	Blank User Template	Blank

ASSIGNABLE CONTROLS – PARAMETERS AND RANGES

Faders, encoders and Mod Wheel:

Subsequent presses of the + button will offer the following parameter setting pages:

Type: CC (Continuous Controller)
CC#: (Controller number, 0 to 127)
Max: (Maximum parameter value, 0 to 127)
Min: (Minimum parameter value, 0 to 127)
Channel: MIDI Channel to be used (1 to 16, or tPL) ; tPL is as defined within the template
Ports: MIDI port to be used (tPL, USB, MId, ALL)

Type: rPn (Registered Parameter Number)
MSB: (Most Significant Byte, 0 to 127)
Bank LSB: (Least Significant Byte, 0 to 127)
Max: (Maximum parameter value, 0 to 127)
Min: (Minimum parameter value, 0 to 127)
Channel: MIDI Channel to be used (1 to 16, or tPL) ; tPL is as defined within the template
Ports: MIDI port to be used (tPL, USB, MId, ALL)

Type: nrP (Non-Registered Parameter Number)
MSB: (Most Significant Byte, 0 to 127)
Bank LSB: (Least Significant Byte, 0 to 127)
Max: (Maximum parameter value, 0 to 127)
Min: (Minimum parameter value, 0 to 127)
Channel: MIDI Channel to be used (1 to 16, or tPL) ; tPL is as defined within the template
Ports: MIDI port to be used (tPL, USB, MId, ALL)

Drum pads:

Type: not
Note: C-2 to G8
Max: (Maximum parameter value, 0 to 127)
Min: (Minimum parameter value, 0 to 127)
Channel: MIDI Channel to be used (1 to 16, or tPL) ; tPL is as defined within the template
Ports: MIDI port to be used (tPL, USB, MId, ALL)

Type: CC, rPn and nrP: as for encoders/faders

Buttons:

Type: CC

CC#: (Controller number, 0 to 127)

Btn.Type: s91

Value: (0 to 127)

Channel: MIDI Channel to be used (1 to 16, or tPL) ; tPL is as defined within the template

Ports: MIDI port to be used (tPL, USb, MId, ALL)

Btn.Type: Mty

Press: (0 to 127)

Release: (0 to 127)

Channel: MIDI Channel to be used (1 to 16, or tPL) ; tPL is as defined within the template

Ports: MIDI port to be used (tPL, USb, MId, ALL)

Btn.Type: T91

On: (0 to 127)

Off: (0 to 127)

Channel: MIDI Channel to be used (1 to 16, or tPL) ; tPL is as defined within the template

Ports: MIDI port to be used (tPL, USb, MId, ALL)

Btn.Type: StP

To: (0 to 127)

From: (0 to 127)

StepSize: (1 to 64)

Channel: MIDI Channel to be used (1 to 16, or tPL) ; tPL is as defined within the template

Ports: MIDI port to be used (tPL, USb, MId, ALL)

Type: rPn (Registered Parameter Number)

MSB: (Most Significant Byte, 0 to 127)

LSB: (Least Significant Byte, 0 to 127)

Btn.Type: s91

Value: (0 to 127)

Channel: MIDI Channel to be used (1 to 16, or tPL) ; tPL is as defined within the template

Ports: MIDI port to be used (tPL, USb, MId, ALL)

Btn.Type: Mty

Press: (0 to 127)

Release: (0 to 127)

Channel: MIDI Channel to be used (1 to 16, or tPL) ; tPL is as defined within the template

Ports: MIDI port to be used (tPL, USb, MId, ALL)

Btn.Type: T91

On: (0 to 127)

Off: (0 to 127)

Channel: MIDI Channel to be used (1 to 16, or tPL) ; tPL is as defined within the template

Ports: MIDI port to be used (tPL, USb, MId, ALL)

Btn.Type: StP
 To: (0 to 127)
 From: (0 to 127)
 StepSize: (1 to 64)
 Channel: MIDI Channel to be used (1 to 16, or tPL) ; tPL is as defined within the template
 Ports: MIDI port to be used (tPL, USb, MId, ALL)

Type: nrP (Non-registered Parameter Number)
 MSB: (Most Significant Byte, 0 to 127)
 LSB: (Least Significant Byte, 0 to 127)
 Btn.Type: s91
 Value: (0 to 127)
 Channel: MIDI Channel to be used (1 to 16, or tPL) ; tPL is as defined within the template
 Ports: MIDI port to be used (tPL, USb, MId, ALL)

Btn.Type: Mty
 Press: (0 to 127)
 Release: (0 to 127)
 Channel: MIDI Channel to be used (1 to 16, or tPL) ; tPL is as defined within the template
 Ports: MIDI port to be used (tPL, USb, MId, ALL)

Btn.Type: T91
 On: (0 to 127)
 Off: (0 to 127)
 Channel: MIDI Channel to be used (1 to 16, or tPL) ; tPL is as defined within the template
 Ports: MIDI port to be used (tPL, USb, MId, ALL)

Btn.Type: StP
 To: (0 to 127)
 From: (0 to 127)
 StepSize: (1 to 64)
 Channel: MIDI Channel to be used (1 to 16, or tPL) ; tPL is as defined within the template
 Ports: MIDI port to be used (tPL, USb, MId, ALL)

Type: Pr9
 Bank MSB: (Most Significant Byte, 0 to 127)
 Bank LSB: (Least Significant Byte, 0 to 127)
 Btn.Type: s91
 Value: (0 to 127)
 Channel: MIDI Channel to be used (1 to 16, or tPL) ; tPL is as defined within the template
 Ports: MIDI port to be used (tPL, USb, MId, ALL)

Btn.Type: Mty
 Press: (0 to 127)
 Release: (0 to 127)
 Channel: MIDI Channel to be used (1 to 16, or tPL) ; tPL is as defined

within the template
Ports: MIDI port to be used (tPL, USb, MId, ALL)
Btn.Type: T91
On: (0 to 127)
Off: (0 to 127)
Channel: MIDI Channel to be used (1 to 16, or tPL) ; tPL is as defined
within the template
Ports: MIDI port to be used (tPL, USb, MId, ALL)
Btn.Type: StP
To: (0 to 127)
From: (0 to 127)
StepSize: (1 to 64)
Channel: MIDI Channel to be used (1 to 16, or tPL) ; tPL is as defined
within the template
Ports: MIDI port to be used (tPL, USb, MId, ALL)

MIDI IMPLEMENTATION TABLE

Function		Transmitted	Recognized	Remarks
Basic Channel	Default	1-16	X	
	Changed	1-16	X	
Mode	Default Messages Altered	Mode 3 0 *****	X	
Note Number	True Voice	0-127 *****	X	
Velocity	Note ON	0	X	
	Note OFF	X	X	
After Touch	Key's	X	X	
	Channel	0	X	
Pitch Bend		0	X	
Control Change		0-127	X	
Program Change	True #	0-127	X	
System Exclusive		0*	0*	*Send / recv firmware update (Novation) Send / recv template data (Novation)
System Pointer Common	Song Position	X	X	
	Song Sel	X	X	
	Tune Request	X	X	
System Real Time	Clock	0	0	
	Commands	0	X	
Aux Messages	Reset All Controllers	0	X	
	Local ON/OFF	X	X	
	Active Sensing	X**	X**	
	System Reset	X	X	**Can be passed thru via MIDI interface
Notes				

Mode 1: OMNI ON, POLY
Mode 3: OMNI OFF, POLY

Mode 2: OMNI ON, MONO
Mode 4: OMNI OFF, MONO

0: Yes
X: No

Novation

A division of Focusrite Audio Engineering Ltd.

Windsor House,

Turnpike Road,

Cressex Business Park,

High Wycombe,

Bucks,

HP12 3FX.

United Kingdom

Tel: +44 1494 462246

Fax: +44 1494 459920


e-mail: sales@novationmusic.com

Web: novationmusic.com

Disclaimer

Novation has taken all possible steps to ensure that the information given here is both correct and complete. In no event can Novation accept any liability or responsibility for any loss or damage to the owner of the equipment, any third party, or any equipment which may result from use of this manual or the equipment which it describes. The information provided in this document may be modified at any time without prior warning. Specifications and appearance may differ from those listed and illustrated.

IMPORTANT SAFETY INSTRUCTIONS

1. Read these instructions.
2. Keep these instructions.
3. Heed all warnings.
4. Follow all instructions.
5. Clean only with dry cloth.
6. Do not install near any heat sources such as radiators, heat registers, stoves, or other apparatus (including amplifiers) that produce heat.
7. Protect the power cord from being walked on or pinched particularly at plugs, convenience receptacles, and the point where they exit from the apparatus.
8. Only use attachments/accessories specified by the manufacturer.
9.  Use only with the cart, stand, tripod, bracket, or table specified by the manufacturer, or sold with the apparatus. When a cart is used, use caution when moving the cart/apparatus combination to avoid injury from tip-over.
10. Unplug this apparatus during lightning storms or when unused for long periods of time.
11. Refer all servicing to qualified service personnel. Servicing is required when the apparatus has been damaged in any way, such as power-supply cord or plug is damaged, liquid has been spilled or objects have fallen into the apparatus, the apparatus has been exposed to rain or moisture, does not operate normally, or has been dropped.
12. No naked flames, such as lighted candles, should be placed on the apparatus.

WARNING: Excessive sound pressure levels from earphones and headphones can cause hearing loss.

WARNING: This equipment must only be connected to USB 1.1, 2.0 or 3.0 type ports

ENVIRONMENTAL DECLARATION

Compliance Information Statement: Declaration of Compliance procedure

Product Identification: Novation Impulse Keyboard

Responsible party: American Music and Sound

Address: 5304 Derry Avenue #C
Agoura Hills,
CA 91301

Telephone: 800-994-4984

This device complies with part 15 of the FCC Rules. Operation is subject to the following two conditions: (1) This device may not cause harmful interference, and (2) this device must accept any interference received, including interference that may cause undesired operation.

For USA

To the User:

1. **Do not modify this unit!** This product, when installed as indicated in the instructions contained in this manual, meets FCC requirements. Modifications not expressly approved by Novation may void your authority, granted by the FCC, to use this product.
2. **Important:** This product satisfies FCC regulations when high quality shielded USB cables with integral ferrite are used to connect with other equipment. Failure to use high quality shielded USB cables with integral ferrite or to follow the installation instructions within this manual may cause magnetic interference with appliances such as radios and televisions and void your FCC authorization to use this product in the USA.
3. **Note:** This equipment has been tested and found to comply with the limits for a Class B digital device, pursuant to part 15 of the FCC Rules. These limits are designed to provide reasonable protection against harmful interference in a residential installation. This equipment generates, uses and can radiate radio frequency energy and, if not installed and used in accordance with the instructions, may cause harmful interference to radio communications. However, there is no guarantee that interference will not occur in a particular installation. If this equipment does cause harmful interference to radio or television reception, which can be determined by turning the equipment off and on, the user is encouraged to try to correct the interference by one or more of the following measures:
 - Reorient or relocate the receiving antenna.
 - Increase the separation between the equipment and receiver.
 - Connect the equipment into an outlet on a circuit different from that to which the receiver is connected.
 - Consult the dealer or an experienced radio/TV technician for help.

For Canada

To the User:

This Class B digital apparatus complies with Canadian ICES-003.

Cet appareil numérique de la classe B est conforme à la norme NMB-003 du Canada.

RoHS Notice

Novation has conformed and product conforms, where applicable, to the European Union's Directive 2002/95/EC on Restrictions of Hazardous Substances (RoHS) as well as the following sections of California law which refer to RoHS, namely sections 25214.10, 25214.10.2, and 58012, Health and Safety Code; Section 42475.2, Public Resources Code.

CAUTION:

The normal operation of this product may be affected by a strong electrostatic discharge (ESD). In the event of this happening, simply reset the unit by removing and then replugging the USB cable. Normal operation should return.

COPYRIGHT AND LEGAL NOTICES

Novation is a registered trade mark of Focusrite Audio Engineering Limited.

Impulse is a trade mark of Focusrite Audio Engineering Limited.

VST is a trade mark of Steinberg Media Technologies GmbH.

All other brand, product and company names and any other registered names or trade marks mentioned in this manual belong to their respective owners.

2021 © Focusrite Audio Engineering Limited. All rights reserved.