

## Launch Control XL HUI support

LaunchControl XL now features HUI integration, which means you can use it to control the Mixer in Cubase, Logic or Pro Tools\*.

*\*Due to the Pro Tools HUI implementation, the centre detent of the LaunchControl XL pan pots will not directly correspond to the centre position of Pro Tool's pan pots. The controls still work relatively to turn pans left and right. HUI is designed to work with encoders for pan and send controls. The Launch Control XL has pots rather than encoders which have an absolute position. In order to make these work we 'emulate' the operation of the encoders in firmware.*

*The pan and send controls don't have pot pick-up, they move immediately from whatever position they are in. This is great if you want to make a small adjustment but you may find you hit the end of the pot's physical travel before before the virtual control on screen. To correct for this you may need to turn the control from one end to the other in order to reset the range. You will need to do this when you first load a session, when you bank tracks (9-16, 17-24 etc.), or when you change from pan to send a, send b etc.*

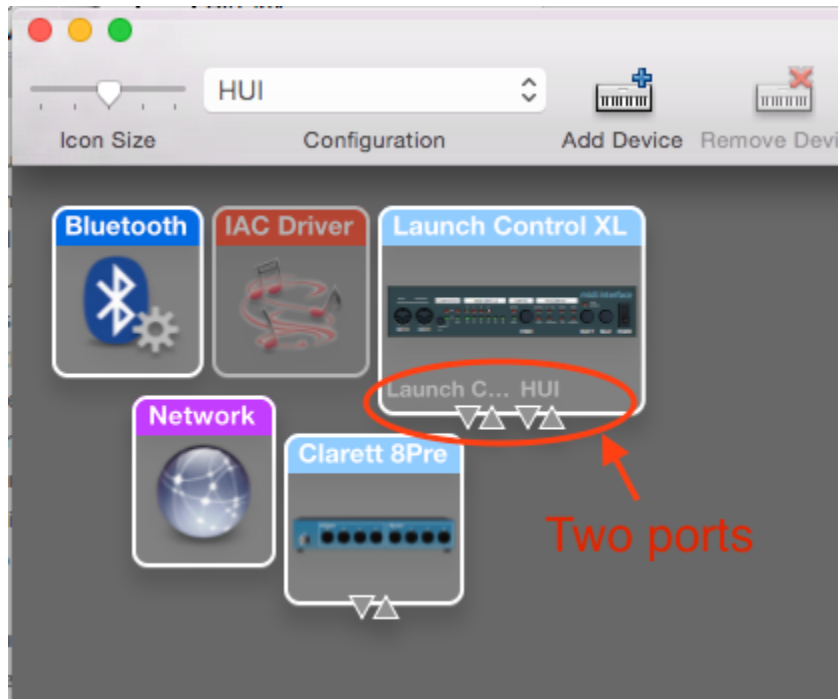
## Installation

To use your LaunchControl XL as a HUI control surface, you need to install the latest firmware version. This is available from the LaunchControl XL downloads page.

To install this, all you need to do is download the appropriate installer for your operating system, connect your LaunchControl to your computer via USB, run the firmware updater and follow the on screen instructions.

Once you've installed the firmware update please disconnect and reconnect the Launch Control XL from your computer.

If use a Mac, please open the 'Audio MIDI Setup' application on your Mac, select 'Window' > 'Show MIDI Studio' and in the 'MIDI Studio' window, ensure the Launch Control XL is showing two MIDI ports - 'Launch Control XL' and 'HUI' as shown below:



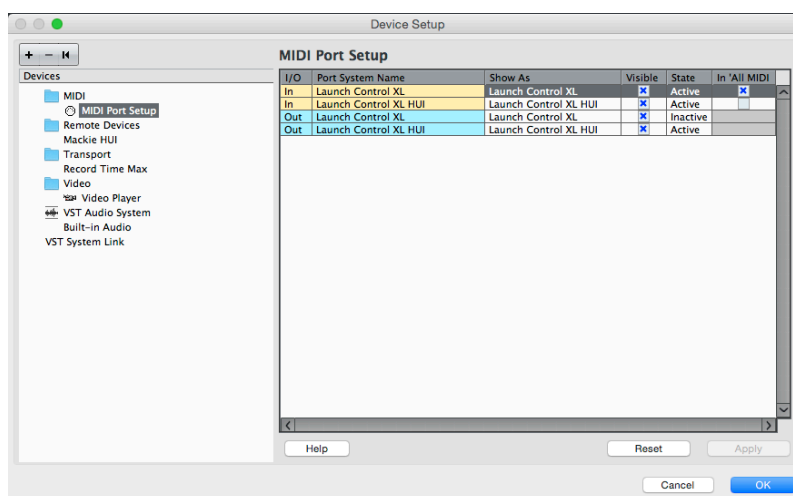
If you only see one MIDI port, select 'Configuration' > 'New Configuration' > 'New Configuration' and name the new configuration 'HUI'.

Once this is done, the Launch Control XL should show the two MIDI ports.

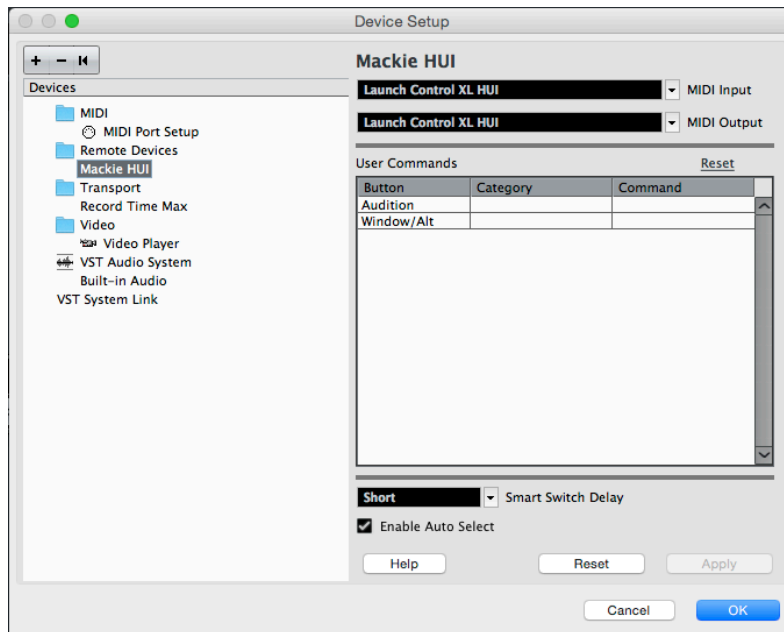
## DAW Setup

### Cubase

To set the LaunchControl XL up as a HUI control surface in Cubase, navigate to 'Devices' > 'Device Setup' > 'MIDI port setup'. Ensure your ports are set as shown below, the 'LaunchControl XL HUI' port MUST NOT have 'in 'all MIDI ins'' enabled:



Click the small '+' icon in Cubase 'Device setup' window and select 'Mackie HUI'. Now, in the 'Mackie HUI' tab, set the input and output port to 'LaunchControl XL HUI' as shown below:

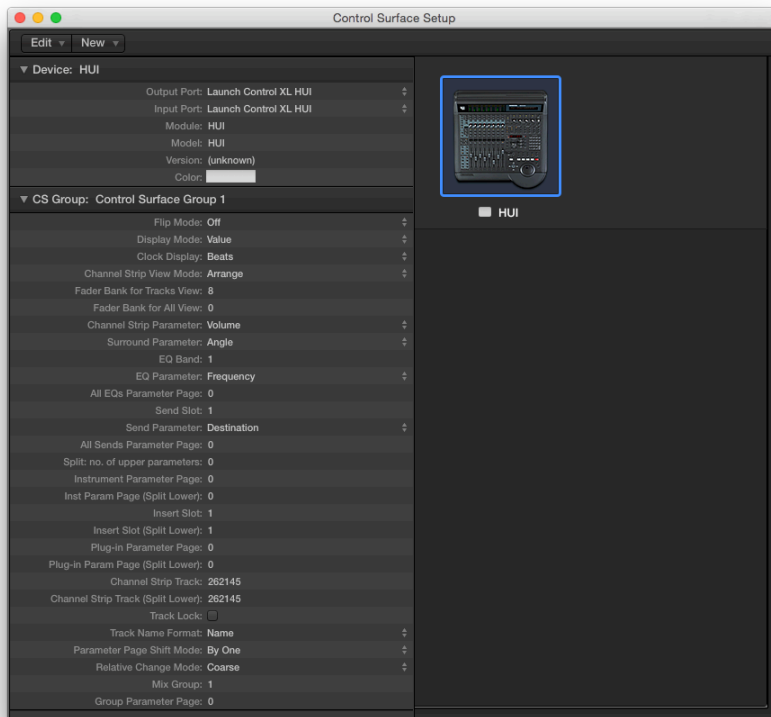


Note: The 'LaunchControl XL HUI' port may show as 'MIDIIN2'/'MIDIOUT2' or something similar on Windows.

## Logic

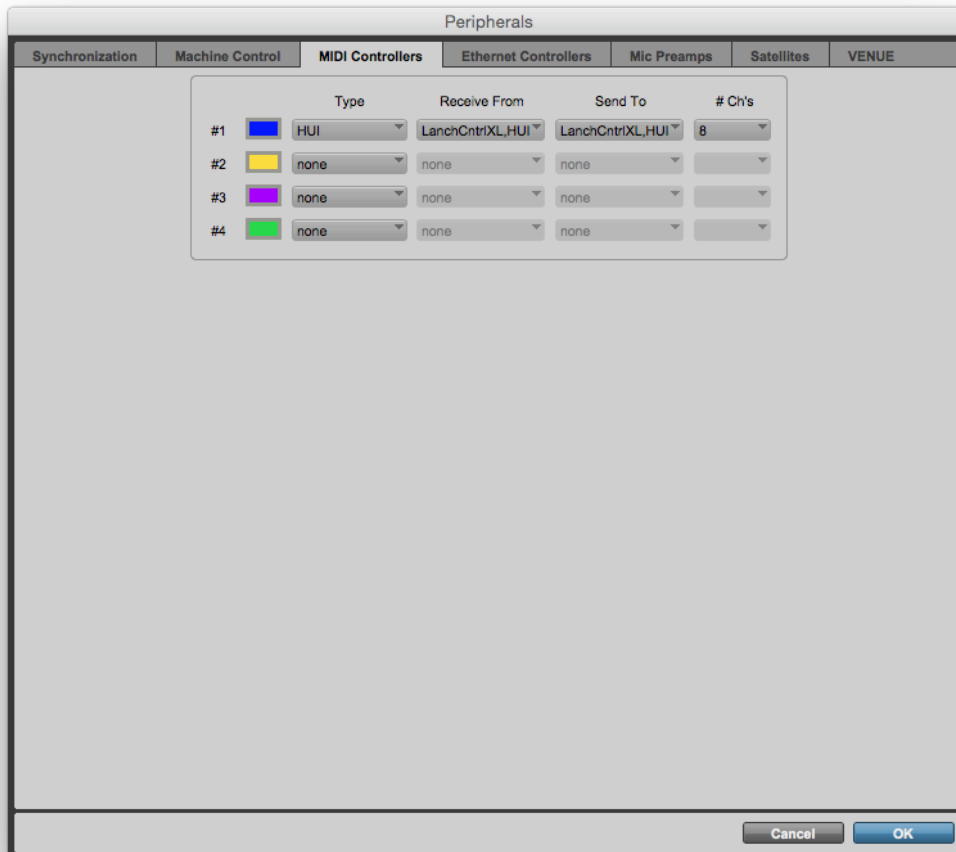
To set the LaunchControl XL up as a HUI control surface in Logic, navigate to 'Logic' > 'Control Surfaces' > 'Setup'. Select 'New' > 'Install' > select 'Mackie Designs | HUI | HUI' from the list and click 'Add'.

Now, select the 'HUI' device in the 'Logic' > 'Control surfaces' > 'Setup' window and set the input and output port as 'LaunchControl XL HUI' as shown below:



## Pro Tools

To set the LaunchControl XL up as a HUI control surface in Pro Tools, navigate to 'Setup' > 'Peripherals' > 'MIDI Controllers'. Set a MIDI controller 'Type' > 'HUI', 'Receive From' > 'LaunchControl XL HUI', 'Send To' > 'LaunchControl XL HUI' and '#Ch's' > '8' as shown below:



**Note:** The 'LaunchControl XL HUI' port may show as 'MIDIIN2'/'MIDIOUT2' or something similar on Windows.

***Due to the Pro Tools HUI implementation, the center detent of the LaunchControl XL pan pots will not directly correspond to the center position of Pro Tool's pan pots.***

## Functionality

- The top two rows of pots are MIDI mappable, they have no default functionality.
- The third row of pots can control pan, send A, B, C, D or E. You can choose which parameter you want to control using the 'Device' button.
- The Sliders control track volume.
- The upper row of buttons are used for track selection.
- The lower row of buttons are used for Mute, Solo or Record Arm. You can choose which parameter you want to control using the 'Mute', 'Solo' and 'Record Arm' buttons on the right hand side of the unit.
- The 'Track Select' buttons can be used for switching between banks of 8 tracks in your DAW.

