

LAUNCHCONTROL

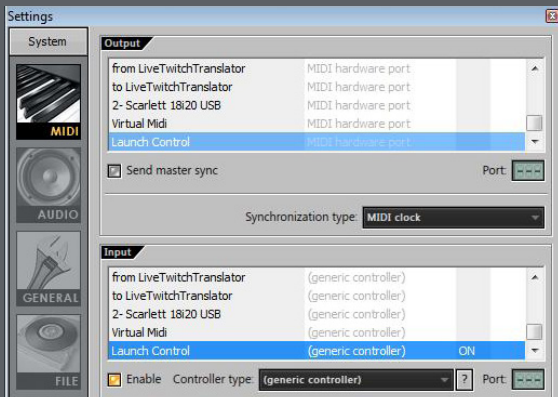
FL STUDIO 11 GUIDE

SOFTWARE REQUIREMENTS

Please ensure that you are using FL Studio version 11.0.3 or above.

SETUP IN FL STUDIO

Load FL Studio MIDI preferences (from the Options menu). Launch Control is displayed in the Output and Input lists. Scroll down the input list and select Launch Control, then click the Enable button. Controller Type will display 'generic controller', and Ports will display '---



SELECTING THE LAUNCH CONTROL TEMPLATE FOR FL STUDIO

Before you can start controlling FL the Launch Control needs to be set to the correct template. Press and hold the Factory Template button, then Pad 7.



USING LAUNCH CONTROL IN FL STUDIO

Launch Control will automatically control Volumes and Pans for channels 1-8. Note that the mixer window in FL Studio must be in focus to control the mixer.



CONTROLLING OTHER PARTNERS IN FL STUDIO

Launch Control can be used to control almost any parameter in FL Studio. Right click on the parameter, select 'link to controller' then move a control on the Launch Control.

FL Studio has deeper mapping capabilities, named multilink. Full instructions on using this feature can be found here:

http://www.image-line.com/support/FLHelp/html/automation_linking.htm