

novation[®] X STATION + Logic 7 Template Notes



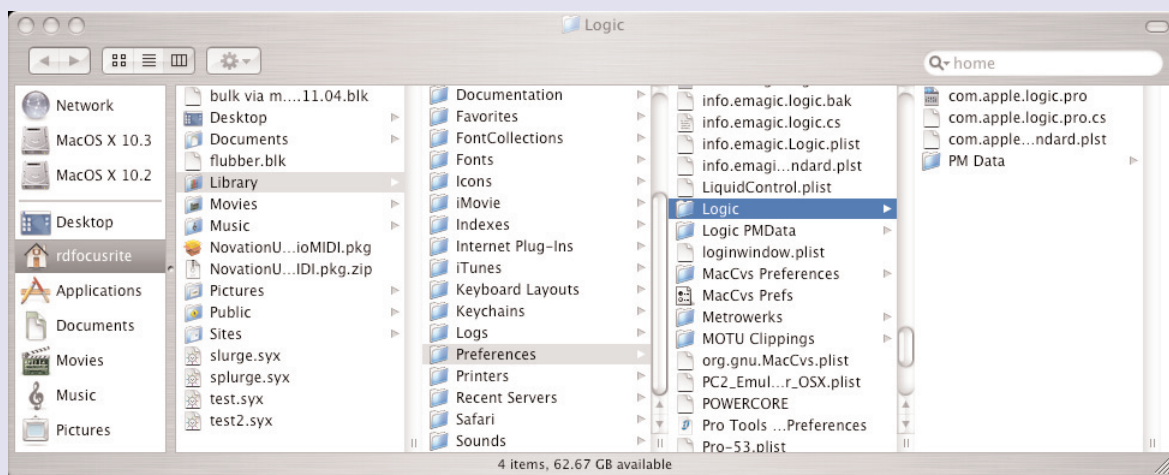
Introduction

The Logic_7_set_up_folder contains a file 'com.apple.logic.pro'. This is the file that contains all the keycommands and control surface assignments that the X-Station Logic 7 template provides. To use this template with the X-Station, it is necessary to import this into Logic. **This will overwrite any existing keycommands / control assignments.**

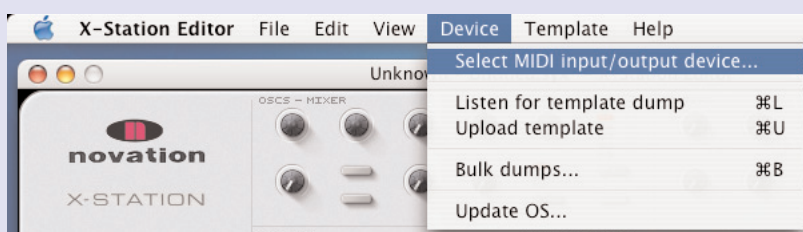
1) To insert the new control profile into Logic, find the file com.apple.logic.pro in the downloaded folder. Navigate to

[user]->Library->Preferences->Logic

and replace the existing com.apple.logic.pro file with the one supplied by Novation.



2) Download the X-Station template editor from www.novationmusic.com and install this to the Mac (if this is not already installed). Connect the X-Station to the Mac and turn the X-station on. From the template editor devices menu, select the X-Station as the midi output for the X-Station.

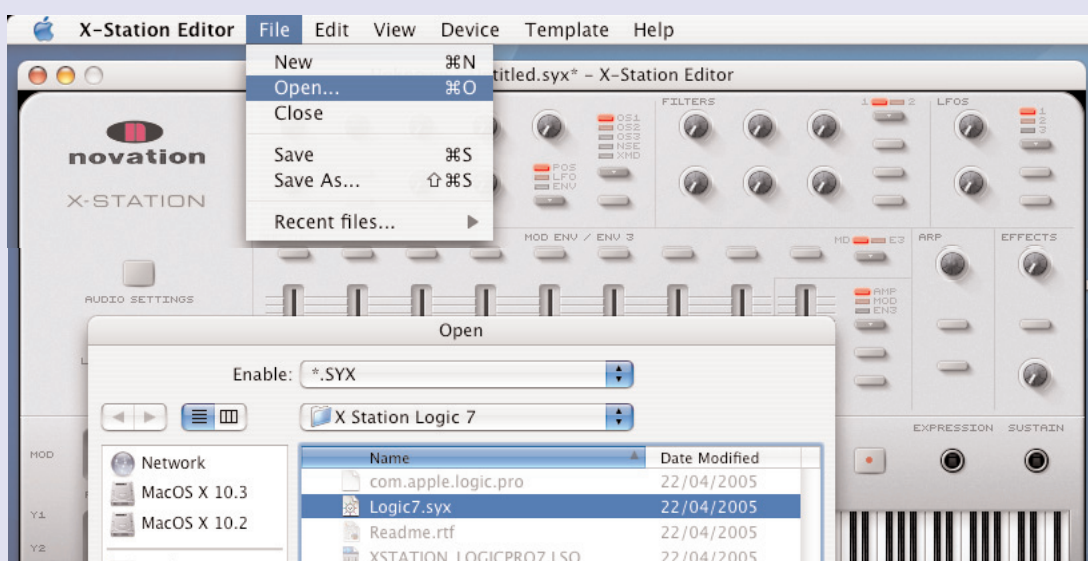


novation[®]

X STATION + Logic 7 Template Notes



3) From the file menu of the template editor, open the Logic7.syx file supplied as part of the Novation Logic 7 download. Click the upload button on the template editor to send this into the X-Station. The X-Station will show that a new template has been received.



This template can be written to the X-Station memory by pressing the write button. The X-station will show:

Logic 7 template
To Template xx

where xx is the number of the currently selected template

The store location can be changed eg to template 19, the existing Logic template created for Logic 6. When a location has been chosen, press the write button again. The screen will show:

Template ReName?
Logic 7

The name does not need to be changed -
press write again.

The screen now shows

Manufact ReName?
Apple

the manufacture name does not need changing -
press write again. The template will be saved.



X STATION + Logic 7 Template Notes



4) Open Logic and load the project XSTATION_LOGICPRO7.LSO.

This project is needed for control of functions that rely on being routed via channel splitters, eg track volumes, pans, mutes and solos. This project is not needed for transport control of Logic Pro. The project can be made the default project to be called up every time Logic is opened by saving this project as 'autoload.lso' to:

[user]->Library->Application Support->Logic->Song Templates.

