

Saffire PRO Range

Dual Unit Support Guide

Contents

Dual Unit Support	2
Getting Started - Computer Connection	2
Controlling Dual Units	2
Naming Units	2
Master Sync Device.....	3
DAW input and output stream order	3
DAW routing.....	4
Zero latency routing	4
Dual Unit look-up tables	9

Dual Unit Support

It is now possible to run two Saffire interfaces connected to a single computer. This enables two devices to be connected to the same system and used as one device expanding the available Inputs and Outputs to your DAW. Dual Device Support is limited to two devices connected to the same bus at sample rates of 48kHz or below.

The following table shows which 2 Saffire units can and cannot be used together:

	Liquid Saffire 56	Saffire PRO 40	Saffire PRO 24 DSP	Saffire PRO 24	Saffire PRO 14
Liquid Saffire 56	NO	NO	YES	YES	YES
Saffire PRO 40	NO	YES	YES	YES	YES
Saffire PRO 26	YES	YES	YES	YES	YES
Saffire PRO 24 DSP	YES	YES	YES	YES	YES
Saffire PRO 24	YES	YES	YES	YES	YES
Saffire PRO 14	YES	YES	YES	YES	YES

Dual unit combinations in **Green** can be used together, those in **Red** cannot be used together.

Therefore any two Saffire PROs can be used together, apart from the Liquid Saffire 56 which can only be used with Saffire PRO 24 DSP, Saffire PRO 24, or Saffire PRO 14

Getting Started - Computer Connection

Computer with a single FireWire port

Connect one Saffire to the FireWire port on the computer.

Connect the second Saffire to the spare FireWire port on the first Saffire.

Note that the Saffire PRO 26, Saffire PRO 24, Saffire PRO 24 DSP and Saffire PRO 14 have a single FireWire port, so will need to be connected to a Saffire PRO 40 or Liquid Saffire 56 and will require the external PSU when connected in this way.

Computer with multiple FireWire ports

Connect both Saffires directly to computer.

Note that both FireWire ports on the computer **MUST** be on the same FireWire bus. i.e. the same PCI / PCIe FireWire card.

At least one Saffire will require the external PSU when connected in this way.

Controlling Dual Units



Saffire MixControl allows control of two units from the same interface. One unit is displayed at a time. To switch focus between units, click on the name field.

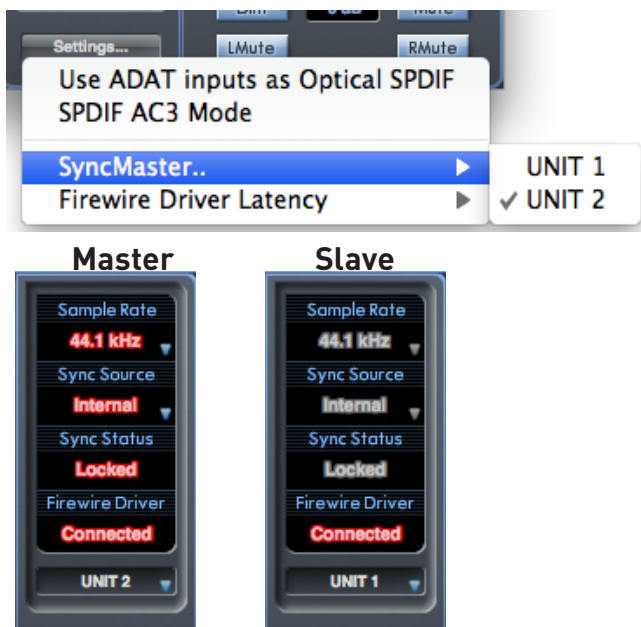
Naming Units



Connected units can be renamed so they may be more easily distinguished in a dual device environment. Right-click on the name field to rename the unit. Note that the name may take a short time to update.

Master Sync Device

When dual Saffire devices are connected to one computer via FireWire, the two devices will automatically sync together with no need for any additional cable connections. However one device will be set as the Master Sync Device.



Click on the settings menu to select which unit is the Sync Master.

Sample rate and digital sync settings can only be set when Saffire MixControl has control of the Master Sync Device. When controlling the slave device, sample rate and sync status are greyed out.

When connecting any external digital devices, the external sync source (Word Clock, ADAT or S/PDIF) must always be connected to the Master Sync Device. If additional digital units are connected, then they must also be slaved to the device providing sync to the Master Sync Device. If the Master device is providing an external sync source to a digital unit, then the digital unit can be connected to either master or slave device.

DAW input and output stream order

The input and output streams of both units will be combined into a single list when viewed from the DAW, or as seen by the operating system audio preferences when outputting sound from iTunes/Windows Media Player.

Each connected Saffire will have a (fixed) hardware ID. Inputs and outputs from the Saffire with the lowest hardware ID will always appear first in the list.

Mac Users: Click on "About Saffire MixControl" from the 'Saffire MixControl' menu to find the hardware ID of the unit currently in focus.



Windows Users: Click on "About Saffire MixControl" from the "Help" menu to find the hardware ID of the unit currently in focus.



The look-up tables at the end of this guide show how the DAW inputs and outputs are routed to the inputs and outputs of Saffire MixControl.

DAW routing

Audio can be routed from Saffire to Saffire using your DAWs own routing capabilities. This allows audio processing from the DAW, but will result in audio latency due to the DAWs audio buffer.

Look-up tables for every possible Saffire combination can be found at the end of the document.

Zero latency routing

When using a single Saffire unit, latency-free monitoring is achieved using internal routing.

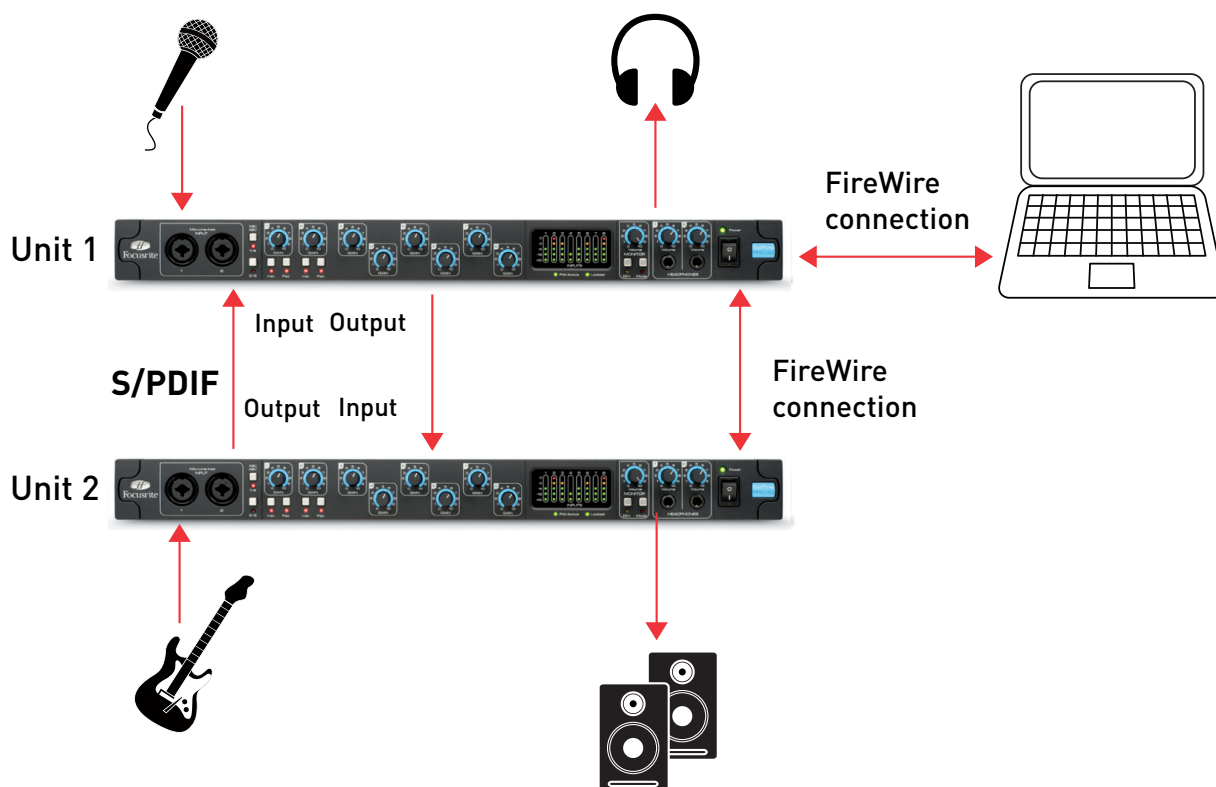
Latency-free monitoring is possible when using two Saffires, however, it is not possible to create a single latency-free monitoring mix for both units using the FireWire connection alone.

The way to achieve this is to make audio connections to/from both units, and configure the MixControl software for each unit.

This article outlines how to achieve this using the S/PDIF inputs and outputs, using the example of 2 Saffire PRO 40s connected to a single computer.

However the set-up process is the same for any Saffire combination.

Firstly, you will need to configure your hardware as outlined in the diagram below:



When you have connected your hardware as shown, you will then need to configure your software.

If you want to monitor all of your inputs from the outputs of both units (as pictured above), both units will need 2 output mixes configured.

- a MONITOR output mix (going to speakers/headphones/etc)
- a S/PDIF output mix (going to the other unit)

Unit 1 Setup Cue Mix (unit 1)

Open Saffire MixControl.

Click on the first mixer tab.

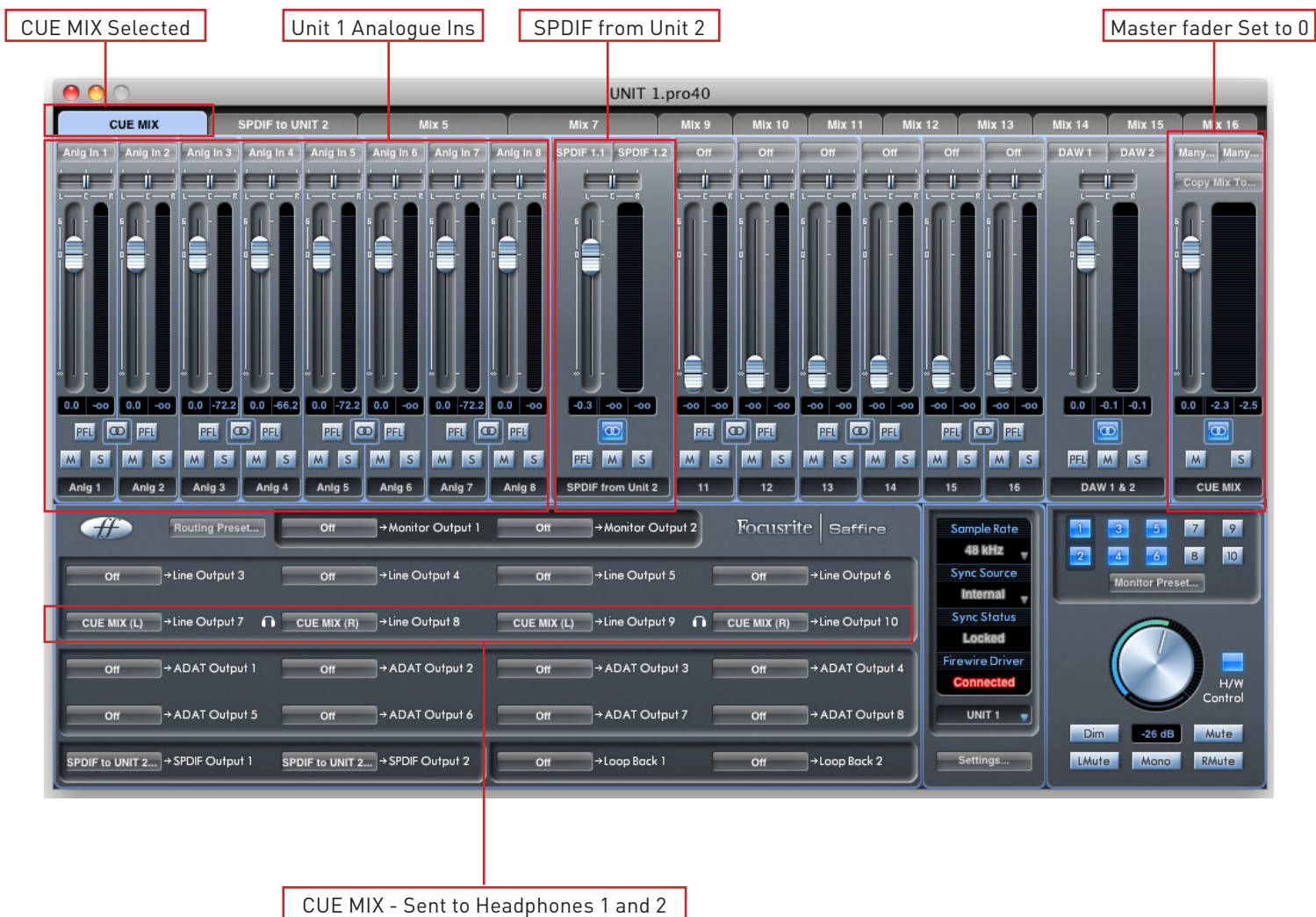
Ensure that the mixer output is stereo by clicking on the stereo button (below the meters of the output channel).

Add the analogue inputs to the mixer, and set the required levels and panning.

Add the S/PDIF input to the mixer (this is the feed from unit 2).

Rename the mix to "Cue Mix" (or similar) by clicking on the name field (below the meters of the output channel).

This mix will be a combination of the audio that you are recording (unit 1 inputs), and the S/PDIF output mix from Unit 2 (connected to the S/PDIF input of unit 1), as shown below:



S/PDIF Output Mix (unit 1)

Click on the second mixer tab.

Ensure that the mixer output is stereo by clicking on the stereo button (below the meters of the output channel).

The input configuration will be the same as in the first mixer, set the levels and panning as required.

The S/PDIF input to the mixer should be MUTED (this prevents feedback).

Rename the mix to "S/PDIF Mix" (or similar) by clicking on the name field (below the meters of the output channel).

The S/PDIF output Mix will just be a mix of the audio inputs on unit 1. The S/PDIF input will be muted to avoid feedback, and the mix will be sent out of the S/PDIF output to unit 2. The configuration is as follows:

The screenshot displays the Focusrite Saffire control panel for UNIT 1.pro40. The interface is divided into several sections:

- Mixer Section:** At the top, there are 16 mixer channels. The first eight channels are labeled "Anlg In 1" through "Anlg In 8". The ninth channel is labeled "SPDIF 1.1" and "SPDIF 1.2". The tenth channel is labeled "SPDIF from Unit 2". The eleventh through sixteenth channels are labeled "Mix 9" through "Mix 16". The "SPDIF to UNIT 2" mixer tab is selected. The master fader for the "SPDIF to UNIT 2" mixer is set to 0.0.
- Routing Section:** Below the mixer, there are routing options for "Monitor Output 1" and "Monitor Output 2". The "SPDIF to UNIT 2" routing is set to "SPDIF Output 1" and "SPDIF Output 2".
- Control Section:** On the right side, there are controls for "Sample Rate" (48 kHz), "Sync Source" (Internal), "Sync Status" (Locked), and "Firewire Driver" (Connected). There is also a "Monitor Preset" section with a knob and buttons for "Dim", "Mute", "LMute", "Mono", and "RMute".

Red boxes and arrows highlight the following configuration details:

- Unit 1 Analogue Ins:** Points to the first eight mixer channels.
- SPDIF to UNIT2 Selected:** Points to the "SPDIF to UNIT 2" mixer tab.
- SPDIF from Unit 2 muted:** Points to the "SPDIF from Unit 2" mixer channel, where the "M" (Mute) button is lit.
- Master fader Set to 0:** Points to the master fader for the "SPDIF to UNIT 2" mixer.
- SPDIF Mix to Unit 2 sent via SPDIF:** Points to the routing options for "SPDIF to UNIT 2" in the routing section.

Unit 2 Setup Monitor Output Mix (unit 2)

Switch Saffire Mix Control to the unit 2.

Click on the first mixer tab.

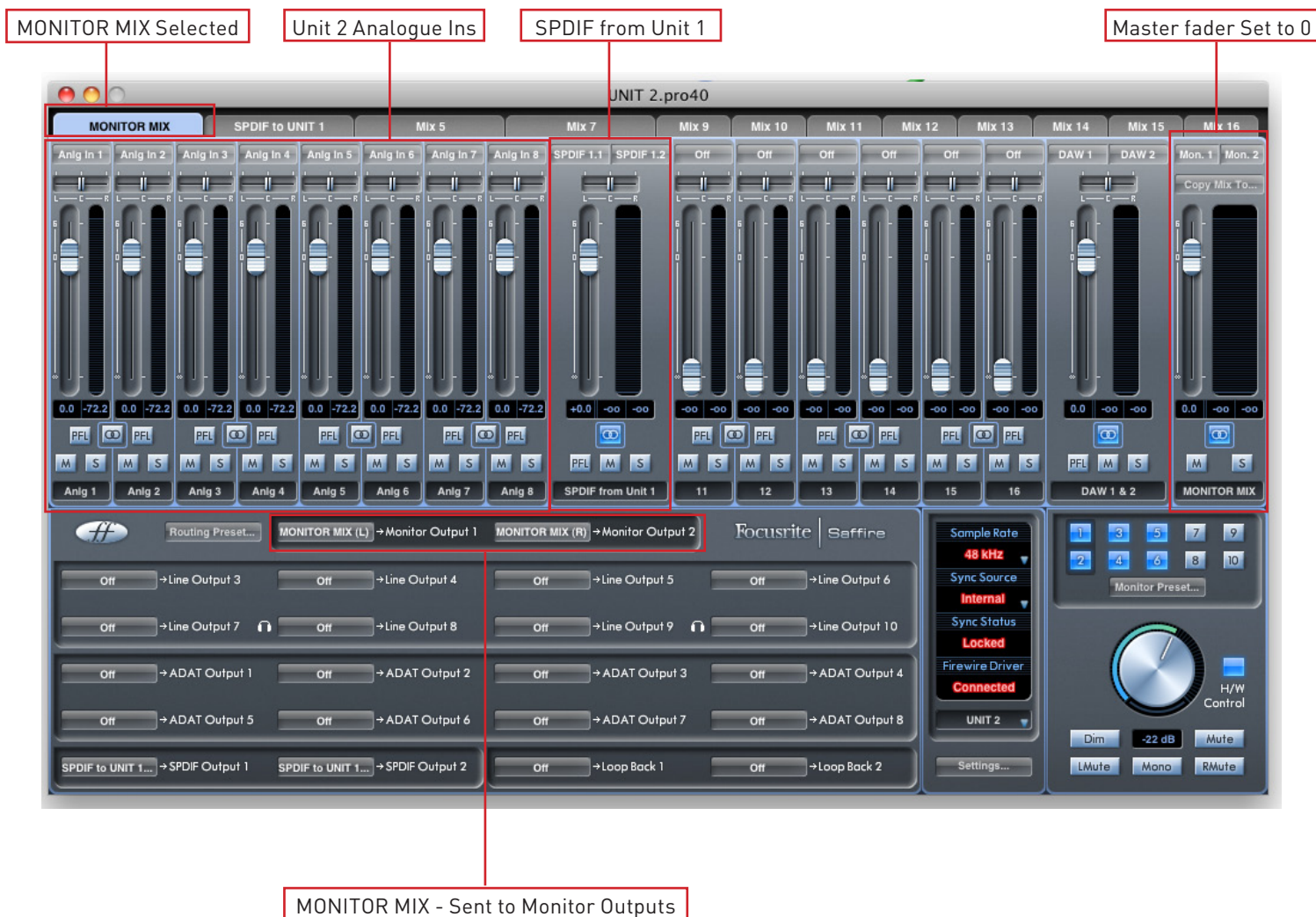
Ensure that the mixer output is stereo by clicking on the stereo button (below the meters of the output channel).

Add the analogue inputs to the mixer, and set the required levels and panning.

Add the S/PDIF input to the mixer (this is the feed from unit 1).

Rename the mix to "MONITOR Mix" (or similar) by clicking on the name field (below the meters of the output channel).

This mix will be a combination of the audio that you are recording (unit 2 inputs), and the S/PDIF output mix from unit 1 (connected to the S/PDIF input of unit 2), as shown below:



S/PDIF Output Mix (unit 2)

Click on the second mixer tab.

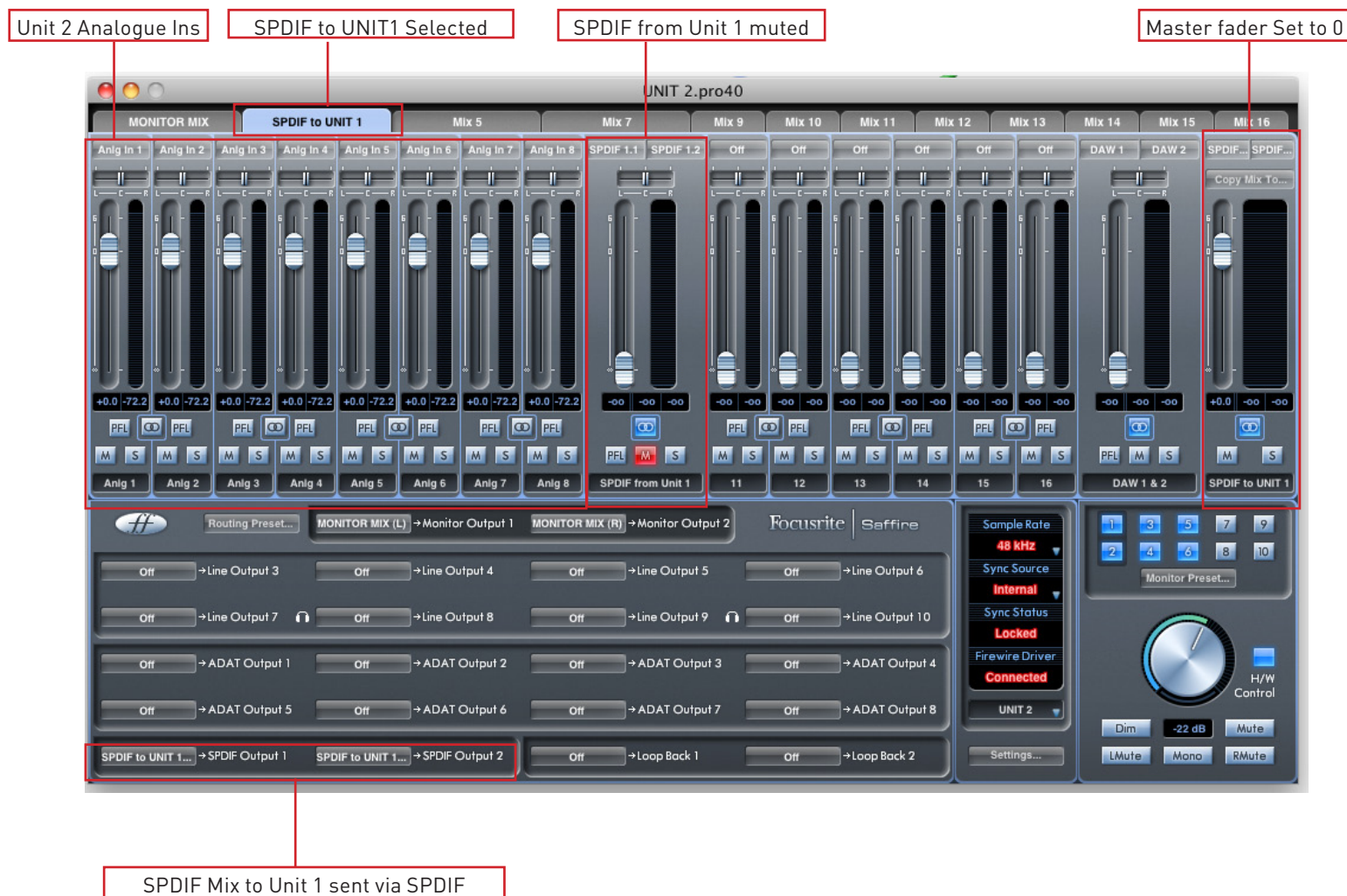
Ensure that the mixer output is stereo by clicking on the stereo button (below the meters of the output channel).

The input configuration will be the same as in the first mixer, set the levels and panning as required.

The S/PDIF input to the mixer should be MUTED (this prevents feedback).

Rename the mix to "S/PDIF Mix" (or similar) by clicking on the name field (below the meters of the output channel).

The S/PDIF output Mix will just be a mix of the audio inputs on unit 2. The S/PDIF input will be muted to avoid feedback, and the mix will be sent out of the S/PDIF output to unit 1. The configuration is as follows:



Alternative options

The above set-ups allow mixing and monitoring of only the analogue inputs connected to both Saffire PRO 40s. 8 channels of analogue plus 2 channels of S/PDIF use a total of 10 mixer channels. There are an additional 8 channels that can be used to mix and monitor additional signal sources - whether it be DAW outputs or ADAT inputs. Simply add these to both the MONITOR Mix and S/PDIF Mix.

By selecting ADAT or analogue inputs/outputs rather than S/PDIF inputs/outputs, it is possible to achieve latency-free monitoring via either ADAT or the analogue inputs/outputs if desired.

It is also possible to send individual audio channels between the units, rather than a stereo mix of inputs. This can be done by selecting individual inputs in the routing panel in the bottom left-hand corner of MixControl, rather than the mixes created above.

Dual unit look-up tables

The following tables show how the inputs and outputs of dual Saffires will appear in your DAW's I/O list.

The order in which the units appear in a DAW is as follows: Pro40; LS56; Pro24; Pro24DSP, Pro 14; Pro 26, this is always the case when using different types of unit. The tables below illustrate how the units inputs and outputs on each unit will appear.

Unit:	Unit Input:	DAW Input:	Saffire Mix Output:	DAW Output:
Saffire PRO 24	Anlg in 1	1	DAW 1	1
	Anlg in 2	2	DAW 2	2
	Anlg in 3	3	DAW 3	3
	Anlg in 4	4	DAW 4	4
	SPDIF 1	5	DAW 5	5
	SPDIF 2	6	DAW 6	6
	ADAT in 1	7	DAW 7	7
	ADAT in 2	8	DAW 8	8
	ADAT in 3	9		
	ADAT in 4	10		
	ADAT in 5	11		
	ADAT in 6	12		
	ADAT in 7	13		
	ADAT in 8	14		
	Loop back 1	15		
	Loop back 2	16		
Saffire PRO 24 DSP	Anlg in 1	17	DAW 1	9
	Anlg in 2	18	DAW 2	10
	Anlg in 3	19	DAW 3	11
	Anlg in 4	20	DAW 4	12
	SPDIF 1	21	DAW 5	13
	SPDIF 2	22	DAW 6	14
	ADAT in 1	23	DAW 7	15
	ADAT in 2	24	DAW 8	16
	ADAT in 3	25		
	ADAT in 4	26		
	ADAT in 5	27		
	ADAT in 6	28		
	ADAT in 7	29		
	ADAT in 8	30		
	Loop back 1	31		
	Loop back 2	32		

Unit:	Input:	DAW Input:	Saffire Mix Output:	DAW Output:
Saffire PRO 24	Anlg in 1	1	DAW 1	1
[Lower ID]	Anlg in 2	2	DAW 2	2
	Anlg in 3	3	DAW 3	3
	Anlg in 4	4	DAW 4	4
	SPDIF 1	5	DAW 5	5
	SPDIF 2	6	DAW 6	6
	ADAT in 1	7	DAW 7	7
	ADAT in 2	8	DAW 8	8
	ADAT in 3	9		
	ADAT in 4	10		
	ADAT in 5	11		
	ADAT in 6	12		
	ADAT in 7	13		
	ADAT in 8	14		
	Loop back 1	15		
	Loop back 2	16		
Saffire PRO 24	Anlg in 1	17	DAW 1	9
[Higher ID]	Anlg in 2	18	DAW 2	10
	Anlg in 3	19	DAW 3	11
	Anlg in 4	20	DAW 4	12
	SPDIF 1	21	DAW 5	13
	SPDIF 2	22	DAW 6	14
	ADAT in 1	23	DAW 7	15
	ADAT in 2	24	DAW 8	16
	ADAT in 3	25		
	ADAT in 4	26		
	ADAT in 5	27		
	ADAT in 6	28		
	ADAT in 7	29		
	ADAT in 8	30		
	Loop back 1	31		
	Loop back 2	32		

Unit:	Input:	DAW Input:	Saffire Mix Output:	DAW Output:
Saffire PRO 24 DSP	Anlg in 1	1	DAW 1	1
[Lower ID]	Anlg in 2	2	DAW 2	2
	Anlg in 3	3	DAW 3	3
	Anlg in 4	4	DAW 4	4
	SPDIF 1	5	DAW 5	5
	SPDIF 2	6	DAW 6	6
	ADAT in 1	7	DAW 7	7
	ADAT in 2	8	DAW 8	8
	ADAT in 3	9		
	ADAT in 4	10		
	ADAT in 5	11		
	ADAT in 6	12		
	ADAT in 7	13		
	ADAT in 8	14		
	Loop back 1	15		
	Loop back 2	16		
Saffire PRO 24 DSP	Anlg in 1	17	DAW 1	9
[Higher ID]	Anlg in 2	18	DAW 2	10
	Anlg in 3	19	DAW 3	11
	Anlg in 4	20	DAW 4	12
	SPDIF 1	21	DAW 5	13
	SPDIF 2	22	DAW 6	14
	ADAT in 1	23	DAW 7	15
	ADAT in 2	24	DAW 8	16
	ADAT in 3	25		
	ADAT in 4	26		
	ADAT in 5	27		
	ADAT in 6	28		
	ADAT in 7	29		
	ADAT in 8	30		
	Loop back 1	31		
	Loop back 2	32		

Unit:	Unit Input:	DAW Input:	Saffire Mix Output:	DAW Output:
Saffire PRO 40	Anlg in 1	1	DAW 1	1
	Anlg in 2	2	DAW 2	2
	Anlg in 3	3	DAW 3	3
	Anlg in 4	4	DAW 4	4
	Anlg in 5	5	DAW 5	5
	Anlg in 6	6	DAW 6	6
	Anlg in 7	7	DAW 7	7
	Anlg in 8	8	DAW 8	8
	SPDIF 1	9	DAW 9	9
	SPDIF 2	10	DAW 10	10
	ADAT in 1	11	DAW 11	11
	ADAT in 2	12	DAW 12	12
	ADAT in 3	13	DAW 13	13
	ADAT in 4	14	DAW 14	14
	ADAT in 5	15	DAW 15	15
	ADAT in 6	16	DAW 16	16
	ADAT in 7	17	DAW 17	17
	ADAT in 8	18	DAW 18	18
	Loop back 1	19	DAW 19	19
	Loop back 2	20	DAW 20	20
Saffire PRO 24	Anlg in 1	21	DAW 1	21
	Anlg in 2	22	DAW 2	22
	Anlg in 3	23	DAW 3	23
	Anlg in 4	24	DAW 4	24
	SPDIF 1	25	DAW 5	25
	SPDIF 2	26	DAW 6	26
	ADAT in 1	27	DAW 7	27
	ADAT in 2	28	DAW 8	28
	ADAT in 3	29		
	ADAT in 4	30		
	ADAT in 5	31		
	ADAT in 6	32		
	ADAT in 7	33		
	ADAT in 8	34		
	Loop back 1	35		
	Loop back 2	36		

Unit:	Unit Input:	DAW Input:	Saffire Mix Output:	DAW Output:
Saffire PRO 40	Anlg in 1	1	DAW 1	1
	Anlg in 2	2	DAW 2	2
	Anlg in 3	3	DAW 3	3
	Anlg in 4	4	DAW 4	4
	Anlg in 5	5	DAW 5	5
	Anlg in 6	6	DAW 6	6
	Anlg in 7	7	DAW 7	7
	Anlg in 8	8	DAW 8	8
	SPDIF 1	9	DAW 9	9
	SPDIF 2	10	DAW 10	10
	ADAT in 1	11	DAW 11	11
	ADAT in 2	12	DAW 12	12
	ADAT in 3	13	DAW 13	13
	ADAT in 4	14	DAW 14	14
	ADAT in 5	15	DAW 15	15
	ADAT in 6	16	DAW 16	16
	ADAT in 7	17	DAW 17	17
	ADAT in 8	18	DAW 18	18
	Loop back 1	19	DAW 19	19
	Loop back 2	20	DAW 20	20
Saffire PRO 24 DSP	Anlg in 1	21	DAW 1	21
	Anlg in 2	22	DAW 2	22
	Anlg in 3	23	DAW 3	23
	Anlg in 4	24	DAW 4	24
	SPDIF 1	25	DAW 5	25
	SPDIF 2	26	DAW 6	26
	ADAT in 1	27	DAW 7	27
	ADAT in 2	28	DAW 8	28
	ADAT in 3	29		
	ADAT in 4	30		
	ADAT in 5	31		
	ADAT in 6	32		
	ADAT in 7	33		
	ADAT in 8	34		
	Loop back 1	35		
	Loop back 2	36		

Unit:	Unit Input:	DAW Input:	Saffire Mix Output:	DAW Output:
Saffire PRO 40	Anlg in 1	1	DAW 1	1
[Lower ID]	Anlg in 2	2	DAW 2	2
	Anlg in 3	3	DAW 3	3
	Anlg in 4	4	DAW 4	4
	Anlg in 5	5	DAW 5	5
	Anlg in 6	6	DAW 6	6
	Anlg in 7	7	DAW 7	7
	Anlg in 8	8	DAW 8	8
	SPDIF 1	9	DAW 9	9
	SPDIF 2	10	DAW 10	10
	ADAT in 1	11	DAW 11	11
	ADAT in 2	12	DAW 12	12
	ADAT in 3	13	DAW 13	13
	ADAT in 4	14	DAW 14	14
	ADAT in 5	15	DAW 15	15
	ADAT in 6	16	DAW 16	16
	ADAT in 7	17	DAW 17	17
	ADAT in 8	18	DAW 18	18
	Loop back 1	19	DAW 19	19
	Loop back 2	20	DAW 20	20
Saffire PRO 40	Anlg in 1	21	DAW 1	21
[Higer ID]	Anlg in 2	22	DAW 2	22
	Anlg in 3	23	DAW 3	23
	Anlg in 4	24	DAW 4	24
	Anlg in 5	25	DAW 5	25
	Anlg in 6	26	DAW 6	26
	Anlg in 7	27	DAW 7	27
	Anlg in 8	28	DAW 8	28
	SPDIF 1	29	DAW 9	29
	SPDIF 2	30	DAW 10	30
	ADAT in 1	31	DAW 11	31
	ADAT in 2	32	DAW 12	32
	ADAT in 3	33	DAW 13	33
	ADAT in 4	34	DAW 14	34
	ADAT in 5	35	DAW 15	35
	ADAT in 6	36	DAW 16	36
	ADAT in 7	37	DAW 17	37
	ADAT in 8	38	DAW 18	38
	Loop back 1	39	DAW 19	39
	Loop back 2	40	DAW 20	40

Unit:	Unit Input:	DAW Input:	Saffire Mix Output:	DAW Output:
Liquid Saffire 56	Anlg in 1	1	DAW 1	1
	Anlg in 2	2	DAW 2	2
	Anlg in 3	3	DAW 3	3
	Anlg in 4	4	DAW 4	4
	Anlg in 5	5	DAW 5	5
	Anlg in 6	6	DAW 6	6
	Anlg in 7	7	DAW 7	7
	Anlg in 8	8	DAW 8	8
	SPDIF 1	9	DAW 9	9
	SPDIF 2	10	DAW 10	10
	ADAT 1 in 1	11	DAW 11	11
	ADAT 1 in 2	12	DAW 12	12
	ADAT 1 in 3	13	DAW 13	13
	ADAT 1 in 4	14	DAW 14	14
	ADAT 1 in 5	15	DAW 15	15
	ADAT 1 in 6	16	DAW 16	16
	ADAT 1 in 7	17	DAW 17	17
	ADAT 1 in 8	18	DAW 18	18
	ADAT 2 in 1	19	DAW 19	19
	ADAT 2 in 2	20	DAW 20	20
	ADAT 2 in 3	21	DAW 21	21
	ADAT 2 in 4	22	DAW 22	22
	ADAT 2 in 5	23	DAW 23	23
	ADAT 2 in 6	24	DAW 24	24
	ADAT 2 in 7	25	DAW 25	25
	ADAT 2 in 8	26	DAW 26	26
	Loop back 1	27	DAW 27	27
	Loop back 2	28	DAW 28	28
Saffire PRO 24	Anlg in 1	29	DAW 1	29
	Anlg in 2	30	DAW 2	30
	Anlg in 3	31	DAW 3	31
	Anlg in 4	32	DAW 4	32
	SPDIF 1	33	DAW 5	33
	SPDIF 2	34	DAW 6	34
	ADAT in 1	35	DAW 7	35
	ADAT in 2	36	DAW 8	36
	ADAT in 3	37		
	ADAT in 4	38		
	ADAT in 5	39		
	ADAT in 6	40		
	ADAT in 7	41		
	ADAT in 8	42		
	Loop back 1	43		
	Loop back 2	44		

Unit:	Unit Input:	DAW Input:	Saffire Mix Output:	DAW Output:
Liquid Saffire 56	Anlg in 1	1	DAW 1	1
	Anlg in 2	2	DAW 2	2
	Anlg in 3	3	DAW 3	3
	Anlg in 4	4	DAW 4	4
	Anlg in 5	5	DAW 5	5
	Anlg in 6	6	DAW 6	6
	Anlg in 7	7	DAW 7	7
	Anlg in 8	8	DAW 8	8
	SPDIF 1	9	DAW 9	9
	SPDIF 2	10	DAW 10	10
	ADAT 1 in 1	11	DAW 11	11
	ADAT 1 in 2	12	DAW 12	12
	ADAT 1 in 3	13	DAW 13	13
	ADAT 1 in 4	14	DAW 14	14
	ADAT 1 in 5	15	DAW 15	15
	ADAT 1 in 6	16	DAW 16	16
	ADAT 1 in 7	17	DAW 17	17
	ADAT 1 in 8	18	DAW 18	18
	ADAT 2 in 1	19	DAW 19	19
	ADAT 2 in 2	20	DAW 20	20
	ADAT 2 in 3	21	DAW 21	21
	ADAT 2 in 4	22	DAW 22	22
	ADAT 2 in 5	23	DAW 23	23
	ADAT 2 in 6	24	DAW 24	24
	ADAT 2 in 7	25	DAW 25	25
	ADAT 2 in 8	26	DAW 26	26
	Loop back 1	27	DAW 27	27
	Loop back 2	28	DAW 28	28
Saffire PRO 24 DSP	Anlg in 1	29	DAW 1	29
	Anlg in 2	30	DAW 2	30
	Anlg in 3	31	DAW 3	31
	Anlg in 4	32	DAW 4	32
	SPDIF 1	33	DAW 5	33
	SPDIF 2	34	DAW 6	34
	ADAT in 1	35	DAW 7	35
	ADAT in 2	36	DAW 8	36
	ADAT in 3	37		
	ADAT in 4	38		
	ADAT in 5	39		
	ADAT in 6	40		
	ADAT in 7	41		
	ADAT in 8	42		
	Loop back 1	43		
	Loop back 2	44		

Unit:	Input:	DAW Input:	Saffire Mix Output:	DAW Output:
Saffire PRO 24 DSP	Anlg in 1	1	DAW 1	1
	Anlg in 2	2	DAW 2	2
	Anlg in 3	3	DAW 3	3
	Anlg in 4	4	DAW 4	4
	SPDIF 1	5	DAW 5	5
	SPDIF 2	6	DAW 6	6
	ADAT in 1	7	DAW 7	7
	ADAT in 2	8	DAW 8	8
	ADAT in 3	9		
	ADAT in 4	10		
	ADAT in 5	11		
	ADAT in 6	12		
	ADAT in 7	13		
	ADAT in 8	14		
	Loop back 1	15		
	Loop back 2	16		
Saffire PRO 14	Anlg in 1	17	DAW 1	9
	Anlg in 2	18	DAW 2	10
	Anlg in 3	19	DAW 3	11
	Anlg in 4	20	DAW 4	12
	SPDIF 1	21	DAW 5	13
	SPDIF 2	22	DAW 6	14
	Loop back 1	23	DAW 7	15
	Loop back 2	24	DAW 8	16
			DAW 9	17
			DAW 10	18
			DAW 11	19
			DAW 12	20

Unit:	Input:	DAW Input:	Saffire Mix Output:	DAW Output:
Saffire PRO 40	Anlg in 1	1	DAW 1	1
	Anlg in 2	2	DAW 2	2
	Anlg in 3	3	DAW 3	3
	Anlg in 4	4	DAW 4	4
	Anlg in 5	5	DAW 5	5
	Anlg in 6	6	DAW 6	6
	Anlg in 7	7	DAW 7	7
	Anlg in 8	8	DAW 8	8
	SPDIF 1	9	DAW 9	9
	SPDIF 2	10	DAW 10	10
	ADAT in 1	11	DAW 11	11
	ADAT in 2	12	DAW 12	12
	ADAT in 3	13	DAW 13	13
	ADAT in 4	14	DAW 14	14
	ADAT in 5	15	DAW 15	15
	ADAT in 6	16	DAW 16	16
	ADAT in 7	17	DAW 17	17
	ADAT in 8	18	DAW 18	18
	Loop back 1	19	DAW 19	19
	Loop back 2	20	DAW 20	20
Saffire PRO 14	Anlg in 1	21	DAW 1	21
	Anlg in 2	22	DAW 2	22
	Anlg in 3	23	DAW 3	23
	Anlg in 4	24	DAW 4	24
	SPDIF 1	25	DAW 5	25
	SPDIF 2	26	DAW 6	26
	Loop back 1	27	DAW 7	27
	Loop back 2	28	DAW 8	28
			DAW 9	29
			DAW 10	30
			DAW 11	31
			DAW 12	32

Unit:	Input:	DAW Input:	Saffire Mix Output:	DAW Output:
Saffire PRO 24	Anlg in 1	1	DAW 1	1
	Anlg in 2	2	DAW 2	2
	Anlg in 3	3	DAW 3	3
	Anlg in 4	4	DAW 4	4
	SPDIF 1	5	DAW 5	5
	SPDIF 2	6	DAW 6	6
	ADAT in 1	7	DAW 7	7
	ADAT in 2	8	DAW 8	8
	ADAT in 3	9		
	ADAT in 4	10		
	ADAT in 5	11		
	ADAT in 6	12		
	ADAT in 7	13		
	ADAT in 8	14		
	Loop back 1	15		
	Loop back 2	16		
Saffire PRO 14	Anlg in 1	17	DAW 1	9
	Anlg in 2	18	DAW 2	10
	Anlg in 3	19	DAW 3	11
	Anlg in 4	20	DAW 4	12
	SPDIF 1	21	DAW 5	13
	SPDIF 2	22	DAW 6	14
	Loop back 1	23	DAW 7	15
	Loop back 2	24	DAW 8	16
			DAW 9	17
			DAW 10	18
			DAW 11	19
			DAW 12	20

Unit:	Input:	DAW Input:	Saffire Mix Output:	DAW Output:
Liquid Saffire 56	Anlg in 1	1	DAW 1	1
	Anlg in 2	2	DAW 2	2
	Anlg in 3	3	DAW 3	3
	Anlg in 4	4	DAW 4	4
	Anlg in 5	5	DAW 5	5
	Anlg in 6	6	DAW 6	6
	Anlg in 7	7	DAW 7	7
	Anlg in 8	8	DAW 8	8
	SPDIF 1	9	DAW 9	9
	SPDIF 2	10	DAW 10	10
	ADAT 1 in 1	11	DAW 11	11
	ADAT 1 in 2	12	DAW 12	12
	ADAT 1 in 3	13	DAW 13	13
	ADAT 1 in 4	14	DAW 14	14
	ADAT 1 in 5	15	DAW 15	15
	ADAT 1 in 6	16	DAW 16	16
	ADAT 1 in 7	17	DAW 17	17
	ADAT 1 in 8	18	DAW 18	18
	ADAT 2 in 1	19	DAW 19	19
	ADAT 2 in 2	20	DAW 20	20
	ADAT 2 in 3	21	DAW 21	21
	ADAT 2 in 4	22	DAW 22	22
	ADAT 2 in 5	23	DAW 23	23
	ADAT 2 in 6	24	DAW 24	24
	ADAT 2 in 7	25	DAW 25	25
	ADAT 2 in 8	26	DAW 26	26
	Loop back 1	27	DAW 27	27
	Loop back 2	28	DAW 28	28
Saffire PRO 14	Anlg in 1	29	DAW 1	29
	Anlg in 2	30	DAW 2	30
	Anlg in 3	31	DAW 3	31
	Anlg in 4	32	DAW 4	32
	SPDIF 1	33	DAW 5	33
	SPDIF 2	34	DAW 6	34
	Loop back 1	35	DAW 7	35
	Loop back 2	36	DAW 8	36
			DAW 9	37
			DAW 10	38
			DAW 11	39
			DAW 12	40

Unit:	Input:	DAW Input:	Saffire Mix Output:	DAW Output:
Saffire PRO 14	Anlg in 1	1	DAW 1	9
[Lower ID]	Anlg in 2	2	DAW 2	10
	Anlg in 3	3	DAW 3	11
	Anlg in 4	4	DAW 4	12
	SPDIF 1	5	DAW 5	13
	SPDIF 2	6	DAW 6	14
	Loop back 1	7	DAW 7	15
	Loop back 2	8	DAW 8	16
			DAW 9	17
			DAW 10	18
			DAW 11	19
			DAW 12	20
Saffire PRO 14	Anlg in 1	9	DAW 1	21
[Higher ID]	Anlg in 2	10	DAW 2	22
	Anlg in 3	11	DAW 3	23
	Anlg in 4	12	DAW 4	24
	SPDIF 1	13	DAW 5	25
	SPDIF 2	14	DAW 6	26
	Loop back 1	15	DAW 7	27
	Loop back 2	16	DAW 8	28
			DAW 9	29
			DAW 10	30
			DAW 11	31
			DAW 12	32

Unit:	Input:	DAW Input:	Saffire Mix Output:	DAW Output:
Saffire PRO 26	Anlg in	1	DAW 1	1
[Lower ID]	Anlg in	2	DAW 2	2
	Anlg in	3	DAW 3	3
	Anlg in	4	DAW 4	4
	Anlg in	5	DAW 5	5
	Anlg in	6	DAW 6	6
	SPDIF 1	7	DAW 7	7
	SPDIF 2	8	DAW 8	8
	Loop back 1	9		
	Loop back 2	10		
	ADAT 1	11		
	ADAT 2	12		
	ADAT 3	13		
	ADAT 4	14		
	ADAT 5	15		
	ADAT 6	16		
	ADAT 7	17		
	ADAT 8	18		
Saffire PRO 26	Anlg in	19	DAW 1	9
[Higher ID]	Anlg in	20	DAW 2	10
	Anlg in	21	DAW 3	11
	Anlg in	22	DAW 4	12
	Anlg in	23	DAW 5	13
	Anlg in	24	DAW 6	14
	SPDIF 1	25	DAW 7	15
	SPDIF 2	26	DAW 8	16
	Loop back 1	27		
	Loop back 2	28		
	ADAT 1	29		
	ADAT 2	30		
	ADAT 3	31		
	ADAT 4	32		
	ADAT 5	33		
	ADAT 6	34		
	ADAT 7	35		
	ADAT 8	36		

Unit:	Input:	DAW Input:	Saffire Mix Output:	DAW Output:
Saffire PRO 14	Anlg in	1	DAW 1	1
	Anlg in	2	DAW 2	2
	Anlg in	3	DAW 3	3
	Anlg in	4	DAW 4	4
	SPDIF 1	5	DAW 5	5
	SPDIF 2	6	DAW 6	6
	Loop back 1	7	DAW 7	7
	Loop back 2	8	DAW 8	8
Saffire PRO 26	Anlg in	9	DAW 1	9
	Anlg in	10	DAW 2	10
	Anlg in	11	DAW 3	11
	Anlg in	12	DAW 4	12
	Anlg in	13	DAW 5	13
	Anlg in	14	DAW 6	14
	SPDIF 1	15	DAW 7	15
	SPDIF 2	16	DAW 8	16
	Loop back 1	17		
	Loop back 2	18		
	ADAT 1	19		
	ADAT 2	20		
	ADAT 3	21		
	ADAT 4	22		
	ADAT 5	23		
	ADAT 6	24		
	ADAT 7	25		
	ADAT 8	26		

Unit:	Input:	DAW Input:	Saffire Mix Output:	DAW Output:
Saffire PRO 24	Anlg in	1	DAW 1	1
	Anlg in	2	DAW 2	2
	Anlg in	3	DAW 3	3
	Anlg in	4	DAW 4	4
	SPDIF 1	5	DAW 5	5
	SPDIF 2	6	DAW 6	6
	ADAT 1	7	DAW 7	7
	ADAT 2	8	DAW 8	8
	ADAT 3	9		
	ADAT 4	10		
	ADAT 5	11		
	ADAT 6	12		
	ADAT 7	13		
	ADAT 8	14		
	Loop back 1	15		
	Loop back 2	16		
Saffire PRO 26	Anlg in	17	DAW 1	9
	Anlg in	18	DAW 2	10
	Anlg in	19	DAW 3	11
	Anlg in	20	DAW 4	12
	Anlg in	21	DAW 5	13
	Anlg in	22	DAW 6	14
	SPDIF 1	23	DAW 7	15
	SPDIF 2	24	DAW 8	16
	Loop back 1	25		
	Loop back 2	26		
	ADAT 1	27		
	ADAT 2	28		
	ADAT 3	29		
	ADAT 4	30		
	ADAT 5	31		
	ADAT 6	32		
	ADAT 7	33		
	ADAT 8	34		

Unit:	Input:	DAW Input:	Saffire Mix Output:	DAW Output:
Saffire PRO 24 DSP	Anlg in	1	DAW 1	9
	Anlg in	2	DAW 2	10
	Anlg in	3	DAW 3	11
	Anlg in	4	DAW 4	12
	SPDIF 1	5	DAW 5	13
	SPDIF 2	6	DAW 6	14
	ADAT 1	7	DAW 7	15
	ADAT 2	8	DAW 8	16
	ADAT 3	9		
	ADAT 4	10		
	ADAT 5	11		
	ADAT 6	12		
	ADAT 7	13		
	ADAT 8	14		
	Loop back 1	15		
	Loop back 2	16		
Saffire PRO 26	Anlg in	17	DAW 1	9
	Anlg in	18	DAW 2	10
	Anlg in	19	DAW 3	11
	Anlg in	20	DAW 4	12
	Anlg in	21	DAW 5	13
	Anlg in	22	DAW 6	14
	SPDIF 1	23	DAW 7	15
	SPDIF 2	24	DAW 8	16
	Loop back 1	25		
	Loop back 2	26		
	ADAT 1	27		
	ADAT 2	28		
	ADAT 3	29		
	ADAT 4	30		
	ADAT 5	31		
	ADAT 6	32		
	ADAT 7	33		
	ADAT 8	34		

Unit:	Input:	DAW Input:	Saffire Mix Output:	DAW Output:
Saffire PRO 40	Anlg in	1	DAW 1	1
	Anlg in	2	DAW 2	2
	Anlg in	3	DAW 3	3
	Anlg in	4	DAW 4	4
	Anlg in	5	DAW 5	5
	Anlg in	6	DAW 6	6
	Anlg in	7	DAW 7	7
	Anlg in	8	DAW 8	8
	SPDIF 1	9	DAW 9	9
	SPDIF 2	10	DAW 10	10
	ADAT 1	11	DAW 11	11
	ADAT 2	12	DAW 12	12
	ADAT 3	13	DAW 13	13
	ADAT 4	14	DAW 14	14
	ADAT 5	15	DAW 15	15
	ADAT 6	16	DAW 16	16
	ADAT 7	17	DAW 17	17
	ADAT 8	18	DAW 18	18
	Loop back 1	19	DAW 19	19
	Loop back 2	20	DAW 20	20
Saffire PRO 26	Anlg in	21	DAW 1	21
	Anlg in	22	DAW 2	22
	Anlg in	23	DAW 3	23
	Anlg in	24	DAW 4	24
	Anlg in	25	DAW 5	25
	Anlg in	26	DAW 6	26
	SPDIF 1	27	DAW 7	27
	SPDIF 2	28	DAW 8	28
	Loop back 1	29		
	Loop back 2	30		
	ADAT 1	31		
	ADAT 2	32		
	ADAT 3	33		
	ADAT 4	34		
	ADAT 5	35		
	ADAT 6	36		
	ADAT 7	37		
	ADAT 8	38		

Unit:	Input:	DAW Input:	Saffire Mix Output:	DAW Output:
Liquid Saffire 56	Anlg in	1	DAW 1	1
	Anlg in	2	DAW 2	2
	Anlg in	3	DAW 3	3
	Anlg in	4	DAW 4	4
	Anlg in	5	DAW 5	5
	Anlg in	6	DAW 6	6
	Anlg in	7	DAW 7	7
	Anlg in	8	DAW 8	8
	SPDIF 1	9	DAW 9	9
	SPDIF 2	10	DAW 10	10
	ADAT 1	11	DAW 11	11
	ADAT 2	12	DAW 12	12
	ADAT 3	13	DAW 13	13
	ADAT 4	14	DAW 14	14
	ADAT 5	15	DAW 15	15
	ADAT 6	16	DAW 16	16
	ADAT 7	17	DAW 17	17
	ADAT 8	18	DAW 18	18
	ADAT 2 1	19	DAW 19	19
	ADAT 2 2	20	DAW 20	20
	ADAT 2 3	21	DAW 21	21
	ADAT 2 4	22	DAW 22	22
	ADAT 2 5	23	DAW 23	23
	ADAT 2 6	24	DAW 24	24
	ADAT 2 7	25	DAW 25	25
	ADAT 2 8	26	DAW 26	26
	Loop back 1	27	DAW 27	27
	Loop back 2	28	DAW 28	28
Saffire PRO 26	Anlg in	29	DAW 1	29
	Anlg in	30	DAW 2	30
	Anlg in	31	DAW 3	31
	Anlg in	32	DAW 4	32
	Anlg in	33	DAW 5	33
	Anlg in	34	DAW 6	34
	SPDIF 1	35	DAW 7	35
	SPDIF 2	36	DAW 8	36
	Loop back 1	37		
	Loop back 2	38		
	ADAT 1	39		
	ADAT 2	40		
	ADAT 3	41		
	ADAT 4	42		
	ADAT 5	43		
	ADAT 6	44		
	ADAT 7	45		
	ADAT 8	46		