

■ Contents

Standalone mode routing	2
How to use multiple units with a PC	3
ADAT/SPDIF options	5
• Enabling	5
• Routing	5
• Disabling (changes required bandwidth)	6
Saffire PRO LED States	7
Session Presets	8



■ Standalone mode routing

Although the Saffire PRO Manual details the exact function of various buttons (e.g. S1 and S2) for activating phantom power and so on, the signal routing in either Tracking or Mixing mode is not listed. Here is an explanation of the routing in both modes:

■ Tracking Mode

Tracking mode is designed for recording with the Saffire PRO away from the computer. As such, there are no complex setups available but simply a default state with optional digital switching. In Tracking mode, all Input settings can be made from the hardware (including turning phantom power on and off with buttons S1 and S2), with the signal routing detailed below.

If Tracking mode is selected in the Standalone mode option of the Hardware menu in SaffireControl PRO, as soon as the Firewire cable is disconnected (and the unit is connected to the external PSU) Tracking mode will begin. All previous settings from SaffireControl PRO will be ignored and Saffire PRO will reset to a default state. In this state, the analogue inputs are routed to the analogue outputs and ADAT outputs as default. However, the ADAT inputs can be routed to the analogue outputs by pressing and holding button S1 (ADAT In 1) or S2 (ADAT In 2).

■ Mixer Mode

Mixer mode is designed for normal use in the studio. Should Saffire PRO be disconnected from the DAW, but still connected to speakers, mics and/or instruments (and an external power supply), the settings will remain the same and the Inputs will still be audible on the Monitors.

If Mixing mode is selected in the Standalone mode option of the Hardware menu in SaffireControl PRO, as soon as the Firewire cable is disconnected (and the unit is connected to the external PSU) Mixing mode will begin. The Saffire PRO will be set up exactly as it was when disconnecting from the computer. This means that the Inputs will be set up the same way, e.g. if a guitar and keyboard are connected to input 1 and inputs 2/3 and the levels set in the Input Mix section, then this will be maintained. The levels of these Inputs going to the analogue outputs are determined by the positions of the output crossfaders as they last were in SaffireControl PRO. However, the S/W end of the crossfader (backing tracks from the sequencer) will be silence in this mode as Saffire PRO is operating away from the DAW.

ADAT Outputs will be disabled as these are normally used to route tracks from the DAW. ADAT Inputs and the S/PDIF In will only be active and routed if done so when the hardware was last connected to a computer, and will only work at 44.1/48kHz (see below).

At all sample rates above 44.1/48kHz, the digital i/o will not be active and the analogue inputs will simply be routed straight to the analogue outputs.

In both Tracking and Mixing modes, make sure that you've selected the sampling rate that you want to work at. Tracking and Mixing modes are set in the Hardware Menu of the SaffireControl PRO software, as detailed in the main Manual.

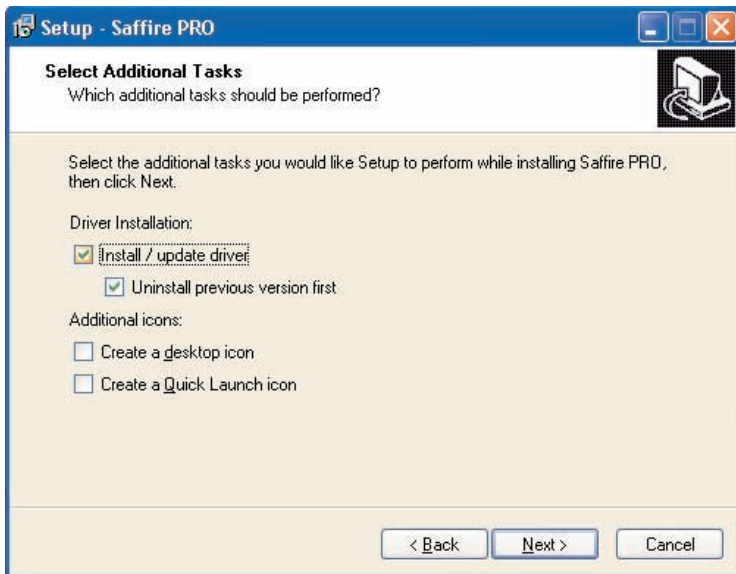


■ How to use multiple units with a PC

If wishing to use multiple units on a Mac, no particular setup procedure (other than the initial Installation) is required. On a PC however, there is a specific process that needs to be undergone, due to need for multiple driver installation, amongst other things. Before attempting to use multiple units with a PC, carry out the following:

Connect the first Saffire PRO to your PC using the supplied Firewire cable.

Run the Saffire PRO Installer. Make sure that all boxes are ticked in the following window:

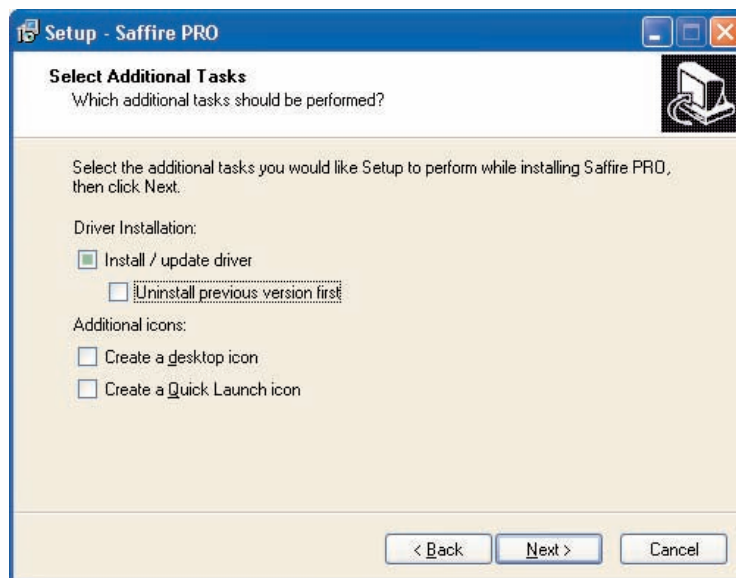


When the Installer is complete, boot up the SaffireControl PRO software and set the desired sample rate. It is also advisable at this stage to name the Saffire PRO so you can identify each unit once all are connected. This is done by clicking the narrow window above the ID switch in the UNIT section of the SaffireControl PRO software.

Now disable the ADATs by going to the Hardware menu of the SaffireControl PRO software.

Once done, shut down SaffireControl PRO and disconnect the first Saffire PRO. Now run the Installer again but this time make sure that only the box for installing the driver is checked, as follows:

[This will make sure that the first driver is not overwritten.]



Connect the next Saffire PRO when prompted by the Installer.

Once the Installation is complete, open up SaffireControl PRO, set the sample rate, name the device and disable the ADATs using the same process as detailed above.

Now shut down SaffireControl and repeat the whole process for any other units you may have.

Note that using more than 3 Saffire PROs will require an extremely large amount of bandwidth and the success of doing so will therefore depend on the spec of the computer in use.

Once the Installation is complete, the units can be chained together and SaffireControl can be booted up. It is highly advisable to power each unit using the supplied PSUs, as the bandwidth requirement for audio streaming alone is fairly significant when multiple units are in use. Upon first connection, there will be a period of shuffling as the units compete for dominance and a master unit is selected. This can take a minute or two. If there is no resolution after a longer period or the LEDs are indicating errors or standalone mode, shut down the software, disconnect the units and then reconnect and try again.

Once all units are happy, each one can be selected using the switch to the right of the ID switch. If the names of each unit have been forgotten then simply select one and click on the ID switch to find out which one it is.

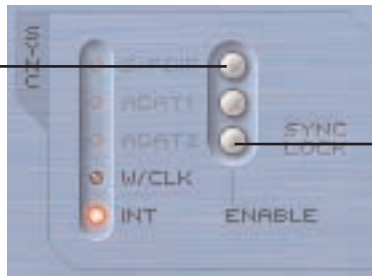


■ ADAT/SPDIF options

■ Enabling

Before the ADAT and S/PDIF Inputs can be used, they must be enabled in the SaffireControl PRO window. This is done, by clicking on the corresponding button, as follows:

Click to activate the S/PDIF In. Once active, the signal can be mixed in the Input stage and will appear as Inputs 9/10 within the sequencer



Click to activate ADAT 2 In. Once active, the signal can be mixed in the Input stage and will appear as Inputs 19-26 within the sequencer

Note that in Standalone modes, the ADATs can be activated by using buttons S1 and S2 on the front panel, as outlined below..

■ Routing

The ADATs are routed directly to and from the sequencer for recording whilst connected to a computer. Any audio connected to ADAT 1 In and ADAT 2 In will appear as Saffire PRO Inputs 11-18 and 19-26, respectively. Similarly, any audio sent to Saffire PRO Outputs 11-18 and 19-26 in the sequencer will be sent to ADAT 1 Out and ADAT 2 Out, respectively.

Whilst in standalone (Tracking) mode, the routing will be as follows:

1. Analogue inputs 1-8 are routed to ADAT outputs 1 and 2 (44.1/48kHz only)
2. Analogue inputs 1-4 are routed to SMUX 1-4 and analogue inputs 5-8 to SMUX 5-8 (88.2/96kHz only)

In standalone tracking mode, the ADAT inputs can be made to route to the analogue outputs as follows:

1. Press and hold S1 to activate ADAT 1 (44.1/48k) or SMUX 1 (88.2/96k). This will become the sync master (as long as a valid source is received) and will route to analogue outputs 1-8 (44.1/48k) or analogue outputs 1-4 (88.2/96k).
2. Press and hold S2 to activate ADAT 2 (44.1/48k) or SMUX 2 (88.2/96k). This will become the sync master (as long as a valid source is received) and will route to analogue outputs 1-8 (44.1/48k) or analogue outputs 5-8 (88.2/96k).

In standalone (Mixing) mode, only the ADAT inputs and S/PDIF inputs/outputs function, as the ADAT Outputs are for host streams (audio from the sequencer) and there are none in standalone mode. (See standalone section above for details.)



■ Disabling (changes required bandwidth)

There is an option in Saffire Control PRO to disable the ADATs, which decreases the bandwidth requirement and therefore increases the chance of successfully connecting other Firewire equipment to the same bus. This is described below:

Mac:

Go to 'Hardware' in the menu bar and select 'Disable ADATs for better CPU usage'

PC:

Go to 'Hardware' in the menu bar and select 'Disable ADATs for better CPU usage'

Click on the Saffire PRO logo on the top right and select 'Disable ADATs for better CPU usage'

Disabling the ADATs will turn off all streaming from the ADAT ports, giving you more CPU power to dedicate to your mix and more bandwidth for other Firewire devices connected to the same bus.



■ Saffire PRO LED States

The LEDs on the front panel of the Saffire PRO hardware change colour and flash to indicate various power states and modes of operation. Each time there is a change to the hardware settings (e.g. from regular to standalone mode), the LEDs will flash. Furthermore, there are two colours for showing how the unit is powered:

Red – Bus-powered

Green – PSU-powered

There are also two flashing speeds to indicate that Saffire PRO has switched to a particular state:

Normal flash – connecting to the computer (via Firewire) for regular mode

Slow flash – connecting to the Saffire PRO's internal drive for standalone mode

In other words, when the Saffire PRO is first connected to the Firewire bus, the LEDs will flash red (at the faster speed) then become solid red when a connection has been made. If a PSU was then connected, the LEDs would turn green. Then, if the Firewire cable was removed, the LEDs would slowly flash green to indicate the change to standalone mode.

As there is no standalone mode where the Firewire cable is connected, the LEDs should never slowly flash red. Similarly, if there is a problem with the Saffire PRO hardware, the LEDs will turn amber. In this instance, contact Focusrite technical support for assistance.



■ Session Presets

To help provide a quick setup of a particular session arrangement, a series of presets have been created for SaffireControl Pro. This means that, rather than having to manually configure the sample rate, digital input activation and sync options, a table can be consulted and the matching preset loaded for instant setup. All 52 session presets are included in a folder called Sessions on the Saffire PRO Install disc. Here is a guide to the session presets:

Session No		Inputs				SYNC			
44	48	Analogue	SPDIF	ADAT 1	ADAT 2	INT	WC	SPDIF	ADAT1
1	17	✓	✓				✓		
2	18	✓	✓					✓	
3	19	✓	✓	✓		✓			
4	20	✓	✓	✓			✓		
5	21	✓	✓	✓				✓	
6	22	✓	✓	✓					✓
7	23	✓	✓	✓	✓	✓			
8	24	✓	✓	✓	✓		✓		
9	25	✓	✓	✓	✓			✓	
10	26	✓	✓	✓	✓				✓
11	27	✓		✓		✓			
12	28	✓		✓			✓		
13	29	✓		✓					✓
14	30	✓		✓	✓	✓			
15	31	✓		✓	✓		✓		
16	32	✓		✓	✓				✓

Session No		Inputs				SYNC			
88	96	Analogue	SPDIF	ADAT SMUX		INT	WC	SPDIF	ADAT1
33	42	✓	✓				✓		
34	43	✓	✓					✓	
35	44	✓	✓	✓		✓			
36	45	✓	✓	✓			✓		
37	46	✓	✓	✓				✓	
38	47	✓	✓	✓					✓
39	48	✓		✓		✓			
40	49	✓		✓			✓		
41	50	✓		✓					✓

Session No		Inputs				SYNC			
176	192	Analogue	SPDIF			INT	WC	SPDIF	
51	53	✓	✓				✓		
52	54	✓	✓					✓	

