

Saffire PRO 24 DSP

FIREWIRE AUDIO INTERFACE WITH REAL-TIME DSP-POWERED TRACKING AND MIXING SOLUTIONS



Focusrite
THE INTERFACE COMPANY



The Focusrite Saffire PRO 24 DSP is Focusrite's latest 16 In / 8 Out FireWire audio interface, featuring real-time DSP-powered tracking and mixing solutions tailor-made for the modern home studio environment. Alongside DSP-powered Compression and EQ for latency-free tracking and 'comfort' reverb, is VRM; a Virtual Reference Monitoring technology that lets you hear your mix in different environments, through different speakers and from different positions, all just using headphones.

KEY FEATURES:

VRM Virtual Reference Monitoring

Hear your mix in different environments, through different speakers and from different positions, just using headphones

Two High Quality Award-winning Focusrite Pre-amps

The best sounding interface in its class. Focusrite's unparalleled pre-amp legacy forms the foundation of this new interface, with two award-winning Focusrite pre-amps.

Onboard DSP-powered, latency-free tracking and mixing tools

Classic Focusrite EQ and Compression for tracking, as well as 'comfort' reverb to place across your monitor mixes.

High Quality 24-bit/96kHz FireWire Interface

Features high quality A-D / D-A conversion and JetPLL™ jitter elimination technology; pristine audio quality and reliable synchronisation are guaranteed.

Total I/O Count of 16 Inputs and 8 Outputs

A host of I/O options are provided*, including a unique loop-back facility for routing audio between software applications via Saffire Mix Control.

Saffire Mix Control Zero-latency DSP Mixer/Router

Routing flexibility and intuitive one-click set-up solutions; Saffire Mix Control provides an 16 x 8 DSP mixer with excellent output routing and monitoring capabilities.

Focusrite VST/AU Plug-in Suite, for use in the mix

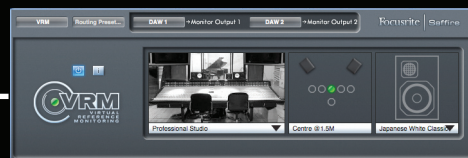
Upgrade your standard sequencer effects and bring a touch of class to your session with all-new Focusrite Compression, Reverb, Gating and EQ VST/AU plug-ins.

Two dedicated front-panel headphone busses

Providing two fully customised monitor mixes, with tactile level control available on the front panel. Dim and Mute switches are also available on the front panel

Bus-powered for mobile recording

Saffire PRO 24 DSP can be powered via FireWire, or via its own power supply



VRM - ROOM MODELS & LOUDSPEAKER MODELS

Mixing Studio



Alesis Monitor One
Auratone 5C
Genelec 1031A
KRK RokIt 6 G2
KRK VXT8
Quested S8
Rogers LS3/5a
Stirling LS3/5a
Yamaha NS-10M Pro

Living room



B&W DM12
KEF Q55
Phocus LCD 26 TV
Stirling LS3/5a

Bedroom



B&W DM12
KEF Q55
Creative SBS35
Goodmans MS188
Stirling LS4/5a

All product names, trademarks, or trade names are the names of their respective owners, which are in no way associated, connected nor affiliated with Focusrite or its Saffire PRO 24 DSP product and which have not endorsed Focusrite's Saffire PRO 24 DSP. These other product names, trademarks, and trade names are used solely to identify and describe the third party loudspeaker systems, the sonic behaviour of which was studied for the VRM technology incorporated within the Saffire PRO 24DSP, and to accurately describe an element of functionality within the Saffire PRO 24DSP. The Saffire PRO 24DSP is an independently engineered technology which utilises Focusrite's VRM Virtual Reference Monitoring (Patent applied for) to actually measure examples of the sonic impact of original loudspeaker systems upon an audio stream, so as to electronically emulate the performance of the original product studied. The result of this process is subjective and may not be perceived by a user as producing the same effects as the original products studied.

